

Asdekor® Dekorasyon
Profilleri

 **Asteknik**
Mühendislik

Çözüm Ortağınız

İçindekiler

REFERANS PROJELER.....	2
SERAMİK BİTİM PROFİLLERİ	3
-Aluminyum Seramik Bitim Profilleri.....	4
-Paslanmaz Çelik Seramik Bitim Profilleri.....	9
-PVC Seramik Bitim Profilleri.....	12
PARKE BİTİM PROFİLLERİ	13
GEÇİŞ PROFİLLERİ	15
-Gizli Vidalı Geçiş Profilleri.....	16
-Vidalı Geçiş Profilleri.....	17
-Yapıştırırmalı (Deliksiz) Eşik Profilleri.....	18
-T Tipi Geçiş Profilleri.....	20
-Kot Farkı Geçiş Profilleri.....	21
-Karo Altı Profilleri.....	23
-Paslanmaz Çelik Eşik Profilleri.....	24
ÇALIŞMA DERZ PROFİLLERİ	25
-Aluminyum Çalışma Derz Profilleri.....	26
-PVC Çalışma Derz Profilleri.....	29
-Vulkanize Çalışma Derz Profilleri.....	30
MERDİVEN BURUN PROFİLLERİ	37
-Kaplama Üstü Merdiven Burun Profilleri.....	38
-Kaplama Altı Merdiven Burun Profilleri.....	41
-Kaymazlık Bantları.....	43
BALKON & TERAS PROFİLLERİ	44
SÜPÜRGELİKLER	45
-Aluminyum Süpürgelik Profilleri.....	46
-Paslanmaz Süpürgelik Profilleri.....	49
-PVC Süpürgelik Profilleri.....	50
BORDÜR PROFİLLERİ	51
LED IŞIKLI PROFİLLER	54
İÇ KÖŞE PROFİLLERİ	56
-Aluminyum İç Köşe Profilleri.....	57
-Paslanmaz Çelik İç Köşe Profilleri.....	58
-PVC İç Köşe Profilleri.....	60
DIŞ KÖŞE PROFİLLERİ	61
-Kaplama Üstü Dış Köşe Profilleri.....	62
-Kaplama Altı Dış Köşe Profilleri.....	64
REFERANS PROJELER.....	67

Ürün Kod Açıklamaları

Tip	Genişlik	Yükseklik	Profil Malzeme Cinsi/Rengi	Fital Malzeme Cinsi/Rengi
BCDA	10	20	A00	E33

ALUMİNYUM

RENK KOD TANIMI

	A00	PRES
	A01	GÜMÜŞ ELOKSAL/MAT
	A02	ALTIN ELOKSAL/MAT
	A03	BRONZ ELOKSAL/MAT
	A04	SİYAH ELOKSAL/MAT
	A09	KOYU KAHVE ELOKSAL/MAT
	AKP	KİMYASAL PARLAK
	A05	GÜMÜŞ ELOKSAL/PARLAK
	A06	ALTIN ELOKSAL/PARLAK
	A07	BRONZ ELOKSAL/PARLAK
	A08	SİYAH ELOKSAL/PARLAK
	A10	KOYU KAHVE ELOKSAL/PARLAK
	A11	INOX/MAT
	A12	INOX/PARLAK

ALUMİNYUM AHŞAP DESENLER

RENK KOD TANIMI

	A70	OAK
	A71	AÇIK BEJ
	A72	ARMUT
	A73	MERBAU
	A74	KIRAZ
	A75	AÇIK ARMUT
	A76	FINDIK
	A77	AKAAĞAÇ
	A78	AÇIK FINDIK
	A80	VENGE
	A83	MAUN

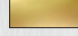

PASLANMAZ ÇELİK

RENK KOD TANIMI

	SS01	GÜMÜŞ SATİNE
	SS02	ALTIN MAT
	SS03	BRONZ MAT
	SS04	SİYAH MAT
	SS05	GÜMÜŞ PARLAK
	SS06	ALTIN PARLAK
	SS07	BRONZ PARLAK
	SS08	SİYAH PARLAK
	SS21	GÜMÜŞ AYNA


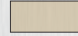


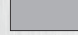
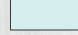

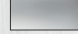
PIRİNÇ

RENK KOD TANIMI

	PP00	DÜZ
	PP30	FIRÇALI





PVC

RENK KOD TANIMI

	P11	FOSFOR
	P30	BEYAZ
	P31	ŞEFFAF
	P32	BEJ
	P33	SİYAH
	P34	SARI
	P35	KAHVERENGİ
	P38	GRİ
	P44	KREM
	P46	AÇIK MAVİ
	P47	PEMBE
	P62	AÇIK GÜMÜŞ GRİ
	P63	AÇIK KAHVE




EPDM

RENK KOD TANIMI

	E30	BEYAZ (RAL 9016)
	E32	BEJ (RAL 1001)
	E33	SİYAH (RAL 9005)
	E38	GRİ (RAL 7046)

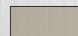

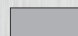
TPE

RENK KOD TANIMI

	T32	BEJ
	T33	SİYAH
	T38	GRİ

PU MASTİK

RENK KOD TANIMI

	BPU	BEJ
	SPU	SİYAH
	GPU	GRİ

CTP

RENK KOD TANIMI

	GCTP	GRİ (RAL 7042)
---	------	----------------

* Gerçek ürünler ile baskı resimler arasında fark olabilir

* Özel profiller miktara göre üretilebilir.

REZİDANS & OFİSLER



Abraj Quartier Gateway Towers
Doha / Qatar



Trump Towers
Istanbul / Turkey



Damac Towers by Paramount
Dubai / U.A.E



Emaar Square
Istanbul / Turkey



The Pearl Qatar / Many Projects
Doha / Qatar



Jaber Al Ahmad New City
Kuwait / Kuwait



Akoya Oxygen 981 Villas
Dubai / U.A.E



Samrya Twin Towers
Doha / Qatar

HOTELLER



Armani Hotel in Burj Khalifa
Dubai / U.A.E



Ritz Carlton Al Bustan Palace
Muscat / Oman



Sheraton Doha
Doha / Qatar



St. Regis Amman
Amman / Jordan



Grand Hyatt Hotel
Doha / Qatar



Hyatt Regency Dushanbe
Dushanbe / Tajikistan



Hilton Doha
Doha / Qatar



St. Regis Astana
Astana / Kazakhstan

ALIŞVERİŞ MERKEZLERİ



Mall of Emirates
Dubai / U.A.E



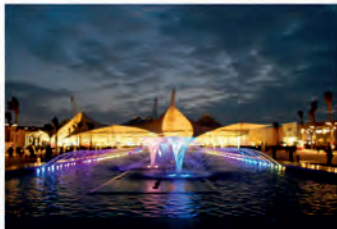
The Avenues Mall
Kuwait / Kuwait



Mall of Qatar
Al Rayyan / Qatar



Cevahir Shopping Mall
Istanbul / Turkey



Mall of Arabia
Cairo / Egypt



Doha Festival City
Doha / Qatar



Ozas Shopping Center
Vilnius / Lithuania



Al - Othaim Mall
Damman / Saudi Arabia



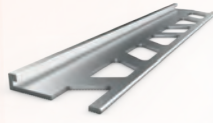
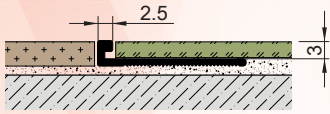
Asdekor tile trims are manufactured from anodized aluminum, stainless steel and pvc various color finishes. They are used at the junctions of tile to tile or tile to non-tile covered surfaces to protect external corners and ensure smooth finish. Tile trim profiles shorten the laying time for tiles by simplifying the alignment.

Item No

Material / Color

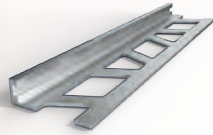
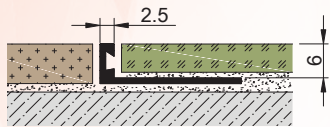
Length Packing Qty.

BSD 2.503



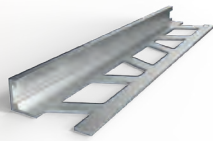
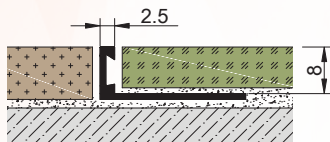
A01	A05	2,7 mt	50 pcs
A02	A06		
A03	AKP		
A04			

BSD 2.506



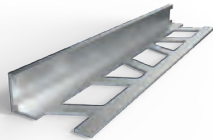
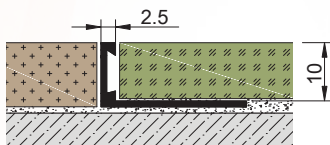
A01	A05	2,7 mt	50 pcs
A02	A06		
A03	AKP		
A04			

BSD 2.508



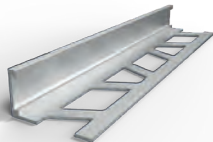
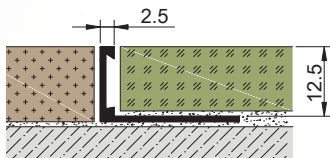
A01	A05	2,7 mt	50 pcs
A02	A06		
A03	AKP		
A04			

BSD 2.510



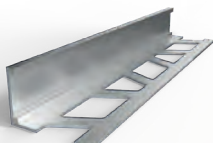
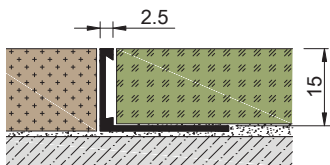
A01	A05	2,7 mt	50 pcs
A02	A06		
A03	AKP		
A04			

BSD 2.512



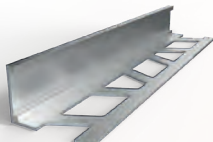
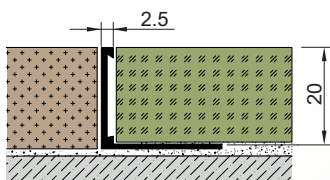
A01	A05	2,7 mt	50 pcs
A02	A06		
A03	AKP		
A04			

BSD 2.515



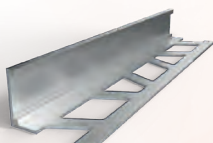
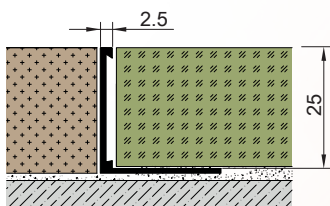
A01	A05	2,7 mt	50 pcs
A02	A06		
A03	AKP		
A04			

BSD 2.520



A01	A05	2,7 mt	50 pcs
A02	A06		
A03	AKP		
A04			

BSD 2.525



A01	A05	2,7 mt	50 pcs
A02	A06		
A03	AKP		
A04			

Please ask for stock info

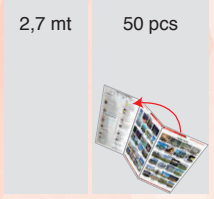
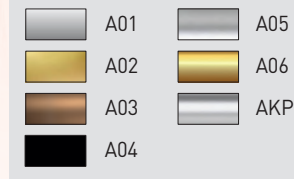
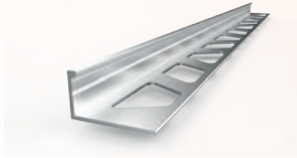
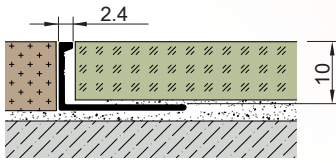
Item No

Material / Color

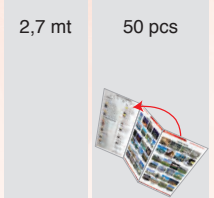
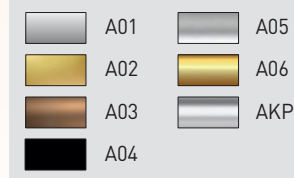
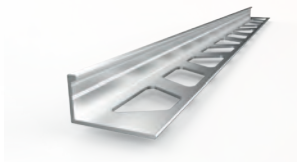
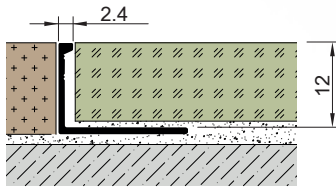
Length

Packing Qty.

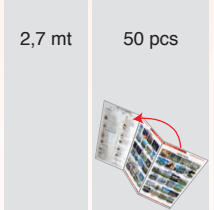
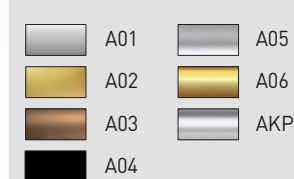
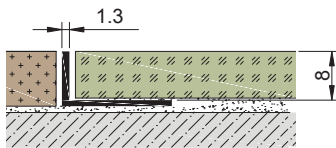
BSD 2.410



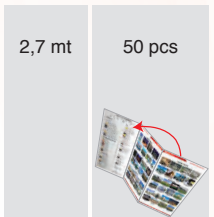
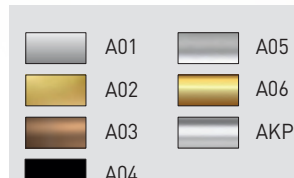
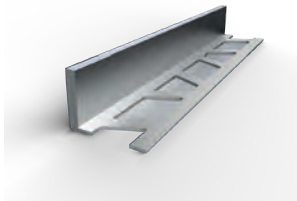
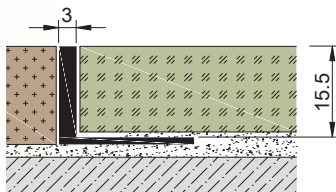
BSD 2.412



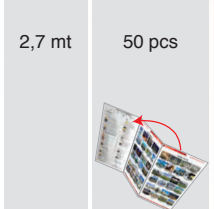
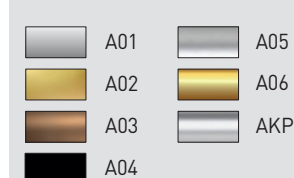
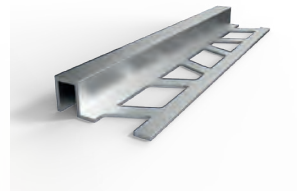
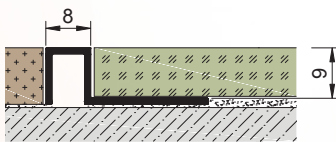
BTLA 1.308



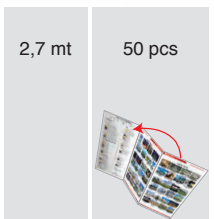
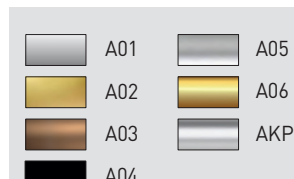
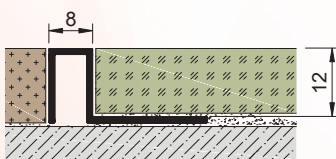
BTLA 0316



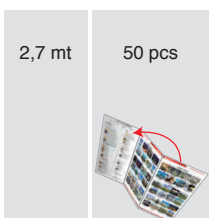
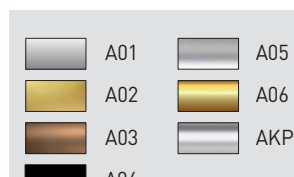
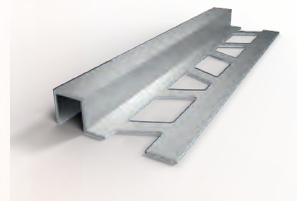
BSG 0809



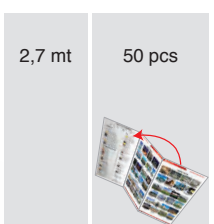
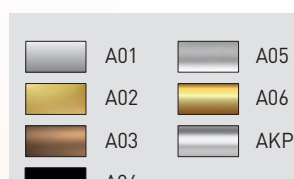
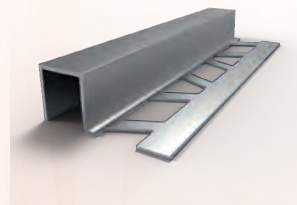
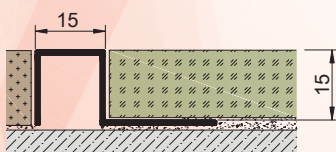
BSG 0812



BSG 1010



BSG 1515



Please ask for stock info

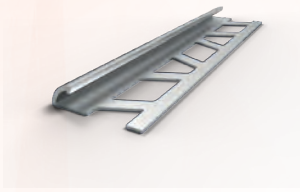
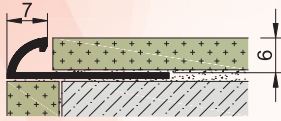



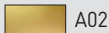





Item No

Material / Color


Length Packing Qty.

BSA 0706

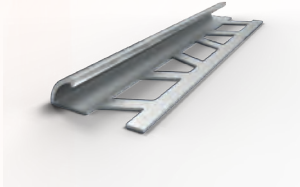
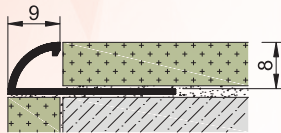



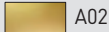
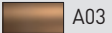




-  A01
-  A02
-  A03
-  A04
-  A05
-  A06
-  AKP

2,7 mt 50 pcs



BSA 0908

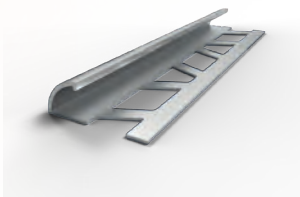
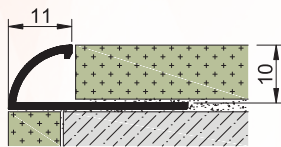



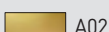



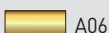
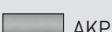
-  A01
-  A02
-  A03
-  A04
-  A05
-  A06
-  AKP

2,7 mt 50 pcs



BSA 1110

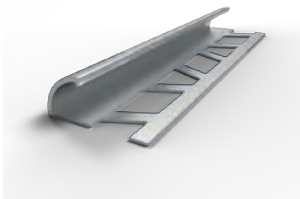
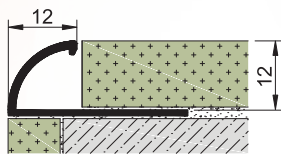



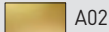





-  A01
-  A02
-  A03
-  A04
-  A05
-  A06
-  AKP

2,7 mt 50 pcs




BSA 1212

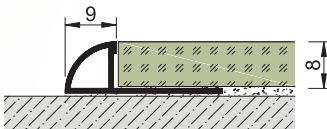



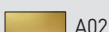




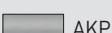
-  A01
-  A02
-  A03
-  A04
-  A05
-  A06
-  AKP

2,7 mt 50 pcs




BSK 0908

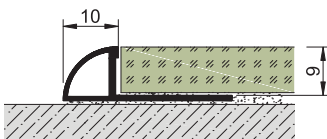



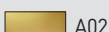





-  A01
-  A02
-  A03
-  A04
-  A05
-  A06
-  AKP

2,7 mt 50 pcs




BSK 1009

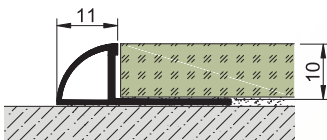



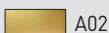





-  A01
-  A02
-  A03
-  A04
-  A05
-  A06
-  AKP

2,7 mt 50 pcs




BSK 1110

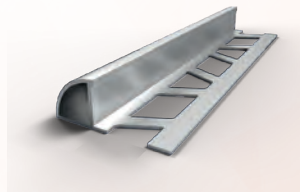
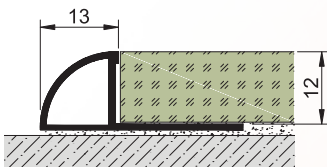



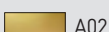





-  A01
-  A02
-  A03
-  A04
-  A05
-  A06
-  AKP

2,7 mt 50 pcs




BSK 1312



-  A01
-  A02
-  A03
-  A04
-  A05
-  A06
-  AKP

2,7 mt 50 pcs



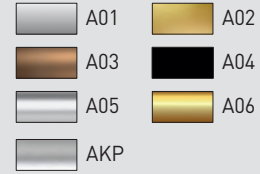
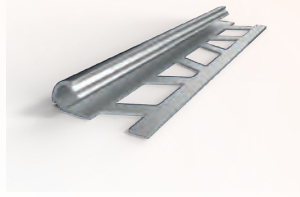
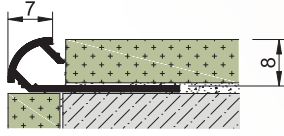
Please ask for stock info

Item No

Material / Color

Length Packing Qty.

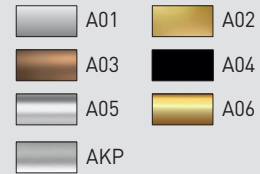
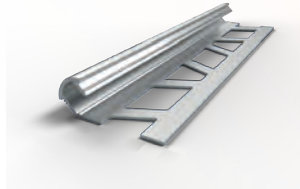
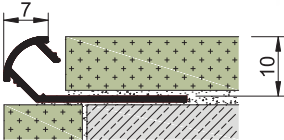
BSA 0708



2,7 mt 50 pcs



BSA 0710

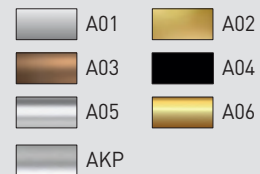
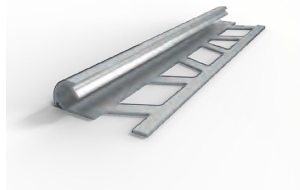
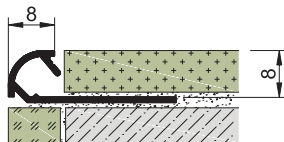


2,7 mt 50 pcs



BSC 0808

- Corner pieces are available
BSC 0808 DK
BSC 0808 IK

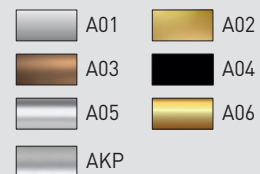
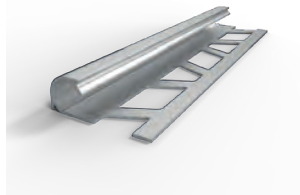
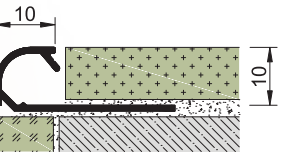


2,7 mt 50 pcs



BSC 1010

- Corner pieces are available
BSC 1010 DK
BSC 1010 IK

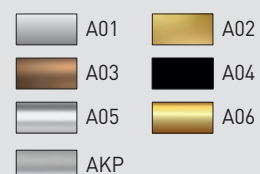
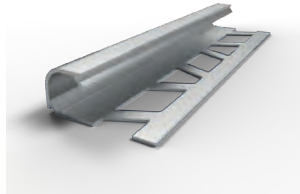
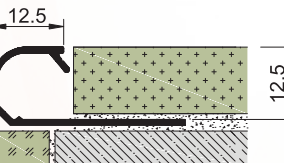


2,7 mt 50 pcs



BSC 1212

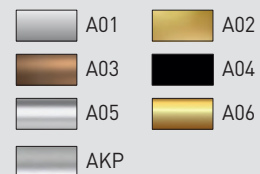
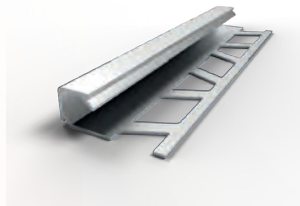
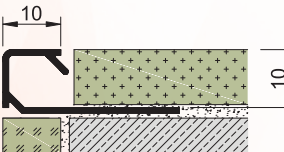
- Corner pieces are available
BSC 1212 DK
BSC 1212 IK



2,7 mt 50 pcs



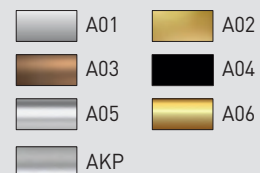
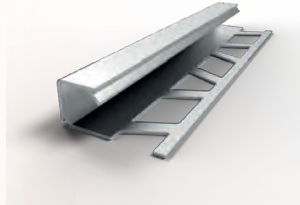
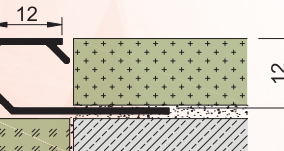
BSF 1010



2,7 mt 50 pcs



BSF 1212



2,7 mt 50 pcs



BSC IK

Corner Pieces

BSC DK

Please ask for stock info

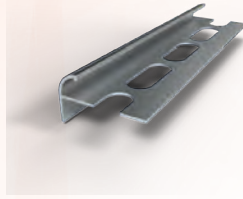
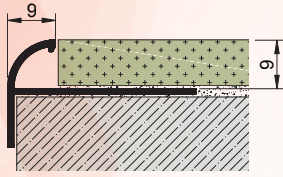









Item No

Material / Color

Length Packing Qty.

BKF 0909

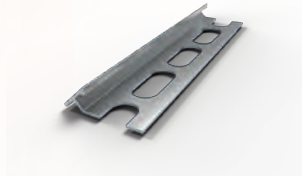
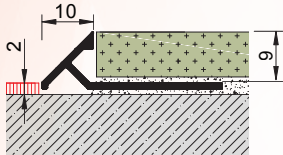




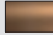



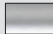
-  A01
-  A02
-  A03
-  A04
-  A05
-  A06
-  AKP

3 mt 20 pcs



BKF 1009

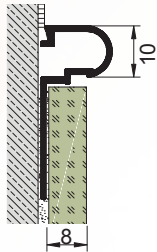


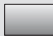
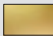





-  A01
-  A02
-  A03
-  A04
-  A05
-  A06
-  AKP

2,7 mt 20 pcs



BSH 1008



-  A01
-  A02
-  A03
-  A04
-  A05
-  A06
-  AKP

3 mt 50 pcs



Please ask for stock info

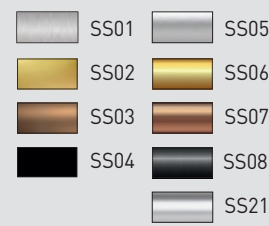
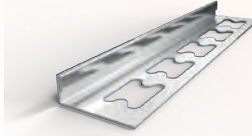
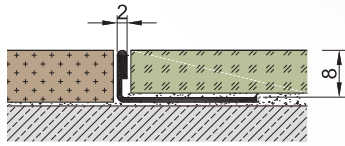
Item No

Material / Color

Length

Packing Qty.

BSD 0208

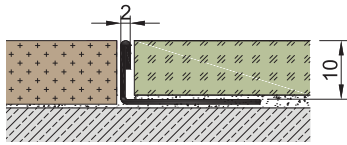


2,5 mt
2,44 mt

10 pcs



BSD 0210

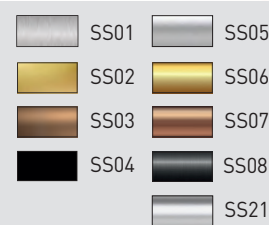
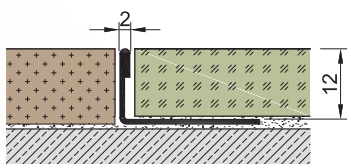


2,5 mt
2,44 mt

10 pcs



BSD 0212

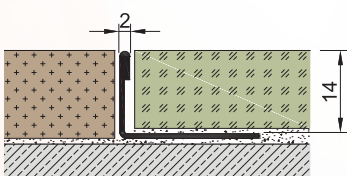


2,5 mt
2,44 mt

10 pcs



BSD 0214

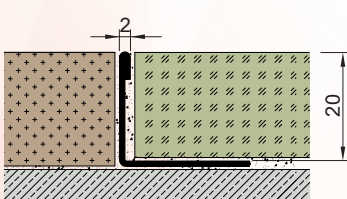


2,5 mt
2,44 mt

10 pcs



BSD 0220

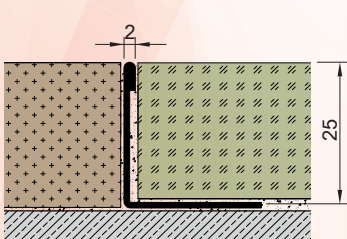


2,5 mt
2,44 mt

10 pcs



BSD 0225



2,5 mt
2,44 mt

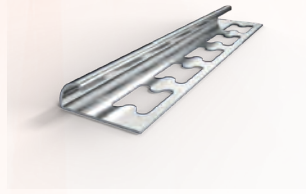
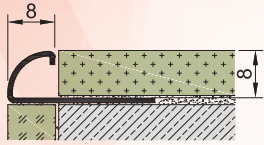
10 pcs



Please ask for stock info

Item No

BSAO 0808
- Corner & end caps are available



Material / Color

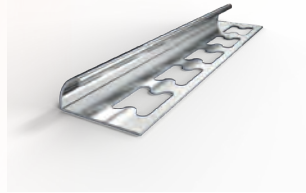
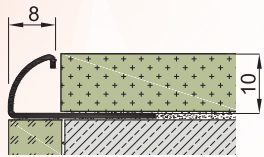
- SS01 SS05
- SS02 SS06
- SS03 SS07
- SS04 SS08
- SS21

Length
2,5 mt
2,44 mt

Packing Qty.
10 pcs



BSA 0810
- Corner & end caps are available



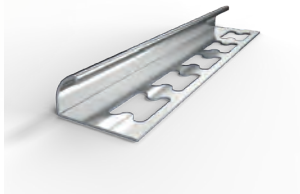
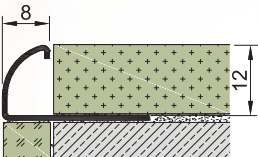
- SS01 SS05
- SS02 SS06
- SS03 SS07
- SS04 SS08
- SS21

Length
2,5 mt
2,44 mt

Packing Qty.
10 pcs



BSA 0812
- Corner & end caps are available



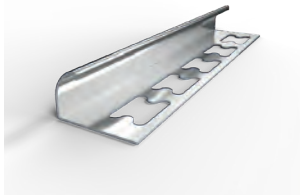
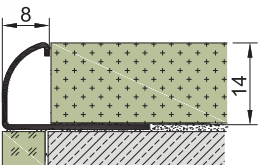
- SS01 SS05
- SS02 SS06
- SS03 SS07
- SS04 SS08
- SS21

Length
2,5 mt
2,44 mt

Packing Qty.
10 pcs



BSA 0814
- Corner & end caps are available



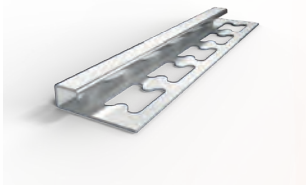
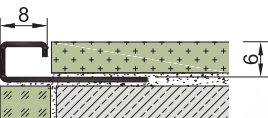
- SS01 SS05
- SS02 SS06
- SS03 SS07
- SS04 SS08
- SS21

Length
2,5 mt
2,44 mt

Packing Qty.
10 pcs



BSG 0806
- Corner & end caps are available



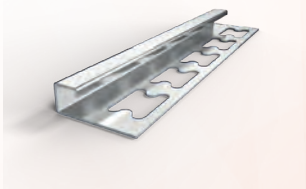
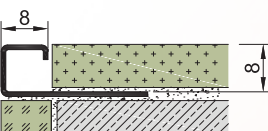
- SS01 SS05
- SS02 SS06
- SS03 SS07
- SS04 SS08
- SS21

Length
2,5 mt
2,44 mt

Packing Qty.
10 pcs



BSG 0808
- Corner & end caps are available



- SS01 SS05
- SS02 SS06
- SS03 SS07
- SS04 SS08
- SS21

Length
2,5 mt
2,44 mt

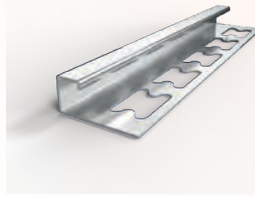
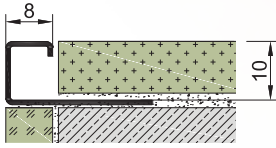
Packing Qty.
10 pcs



Please ask for stock info

Item No

BSG 0810
- Corner & end caps are available



Material / Color

	SS01		SS05
	SS02		SS06
	SS03		SS07
	SS04		SS08
			SS21

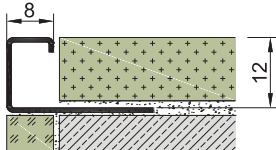
Length Packing Qty.

2,5 mt
2,44 mt

10 pcs



BSGA 0812
- Corner & end caps are available



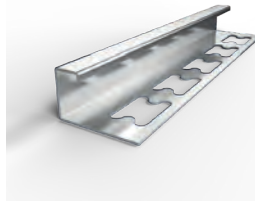
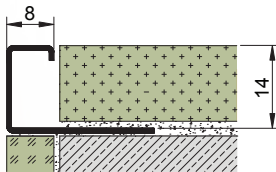
	SS01		SS05
	SS02		SS06
	SS03		SS07
	SS04		SS08
			SS21

2,5 mt
2,44 mt

10 pcs



BSG 0814
- Corner & end caps are available



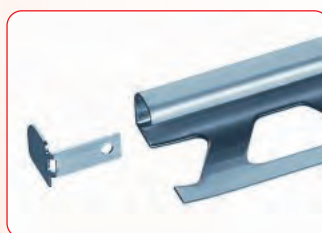
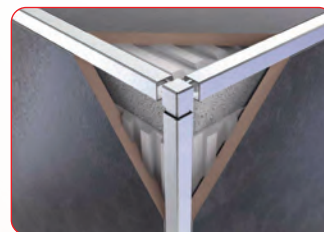
	SS01		SS05
	SS02		SS06
	SS03		SS07
	SS04		SS08
			SS21

2,5 mt
2,44 mt

10 pcs



Corner & end caps



Please ask for stock info



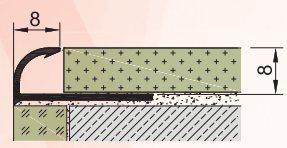
Item No

Material / Color

Length

Packing Qty.

BSA 0808

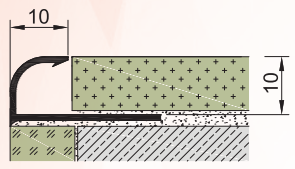


<input type="checkbox"/>	P30
<input type="checkbox"/>	P32
<input type="checkbox"/>	P38
<input type="checkbox"/>	P44

2,7 mt



BSA 1010

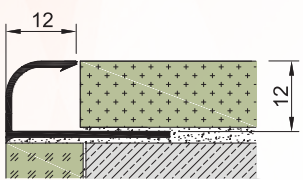


<input type="checkbox"/>	P30
<input type="checkbox"/>	P32
<input type="checkbox"/>	P38
<input type="checkbox"/>	P44

2,7 mt



BSA 12012

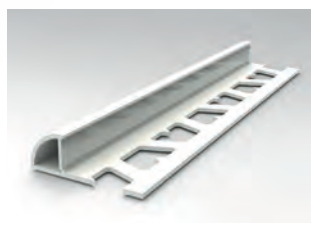
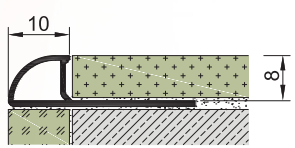


<input type="checkbox"/>	P30
<input type="checkbox"/>	P32
<input type="checkbox"/>	P38
<input type="checkbox"/>	P44

2,7 mt



BSK 1008

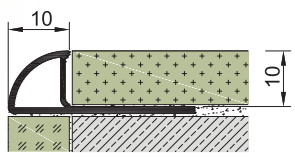


<input type="checkbox"/>	P30
<input type="checkbox"/>	P32
<input type="checkbox"/>	P38
<input type="checkbox"/>	P44

2,7 mt

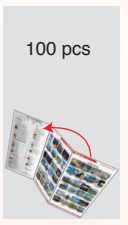


BSK 1010



<input type="checkbox"/>	P30
<input type="checkbox"/>	P32
<input type="checkbox"/>	P38
<input type="checkbox"/>	P44

2,7 mt



Please ask for stock info



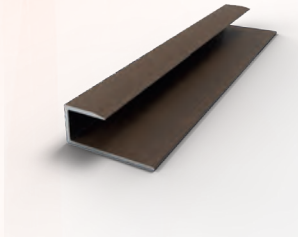
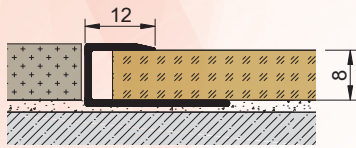
Asdekor parquet edge profiles are produced in anodized and wood pattern coated aluminium in many different color selection. They are used to protect the edge of parquet floors against the risk of breakage and deformation as well as to ensure a decorative finish at the end of parquet floors.

Item No

Material / Color

Length Packing Qty.

BPB 1208



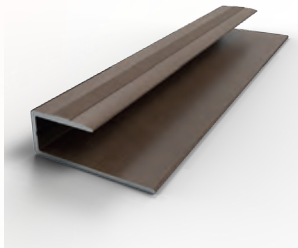
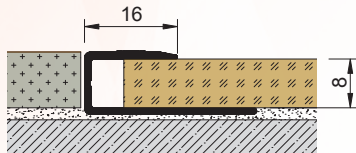
	A01		A72
	A02		A73
	A03		A74
	A04		A05
	A70		A06
	A71		AKP

2,7 mt

20 pcs



BPB 1608



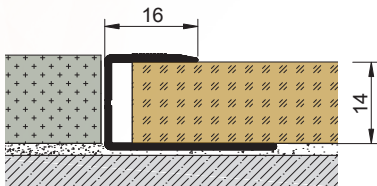
	A01		A72
	A02		A73
	A03		A74
	A04		A05
	A70		A06
	A71		AKP

2,7 mt

20 pcs



BPB 1614



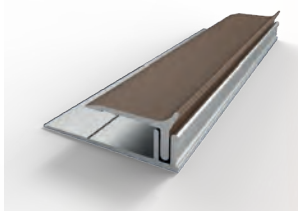
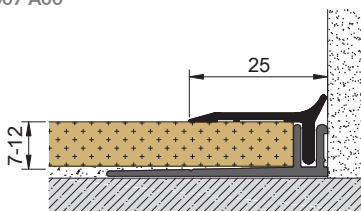
	A01		A72
	A02		A73
	A03		A74
	A04		A05
	A70		A06
	A71		AKP

2,7 mt

20 pcs



BAP 2507
+BAP 4007 A00



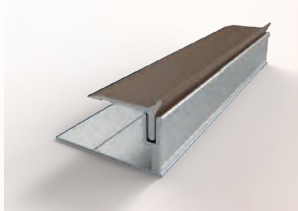
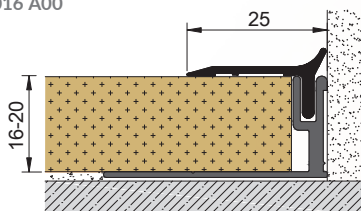
	A01		A72
	A02		A73
	A03		A74
	A04		A05
	A70		A06
	A71		AKP

2,7 mt

20 pcs



BAP 2507
+BAP 4016 A00



	A01		A72
	A02		A73
	A03		A74
	A04		A05
	A70		A06
	A71		AKP

2,7 mt

20 pcs



Please ask for stock info

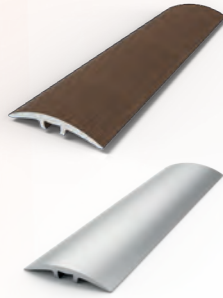
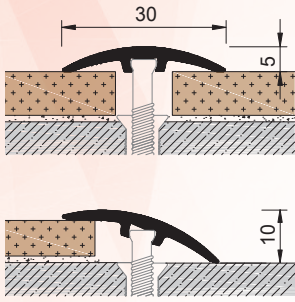


Asdekor transition profiles are produced in anodized aluminum and stainless steel in various color finishes. They are used to cover the two different material joints on the floor whether there's a level difference or not. They can be applied on the floor by an invisible screw, by silicon or double-sided tape.

Item No

**BEG 3005/
BEK 3005**


+ BMV 4107
+ MD 0730 P30



Material / Color

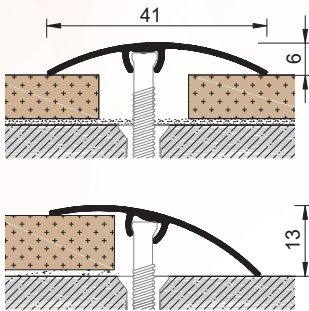
Length Packing Qty.

A01	A72	2,7 mt	20 pcs
A02	A73		
A03	A74		
A04	A05		
A70	A06		
A71	AKP		




**BEG 4106/
BEK 4106**

+ BMV 4107
+ MD 0730 P30



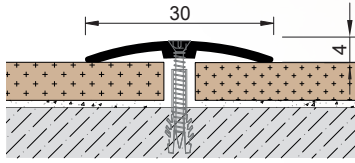
A01	A72	2,7 mt	20 pcs
A02	A73		
A03	A74		
A04	A05		
A70	A06		
A71	AKP		




Please ask for stock info

Item No


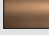



BEP 3004V



Material / Color

Length

Packing Qty.

-  A01
-  A02
-  A03
-  A04
-  A05
-  A06

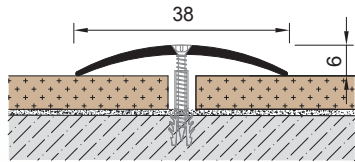
 AKP

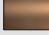


2,7 mt

20 pcs



BEP 3806V



-  A01
-  A02
-  A03
-  A04
-  A05
-  A06

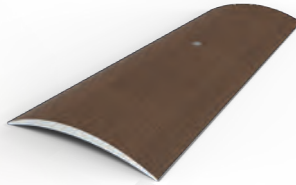
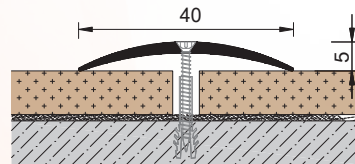
 AKP


2,7 mt

20 pcs



BEP 4005V



-  A01
-  A02
-  A03
-  A04
-  A05
-  A06

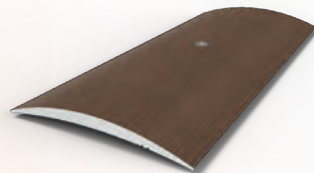
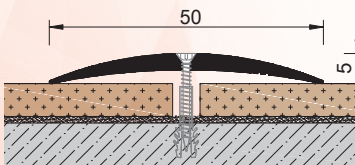
 AKP

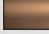
2,7 mt

20 pcs



BEP 5005V



-  A01
-  A02
-  A03
-  A04
-  A05
-  A06

 AKP

2,7 mt

20 pcs



Please ask for stock info

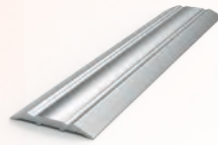
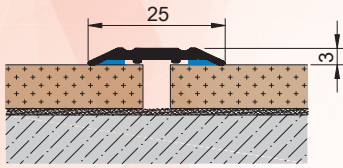


TRANSITION PROFILES

Transition Profiles by Adhesive (without holes)

Transition Profiles

Item No
BEC 2503




Material / Color

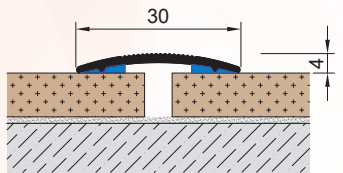
Length **Packing Qty.**

- A01 AKP
- A02
- A03
- A04
- A05
- A06

2,7 mt 20 pcs




BEC 3004

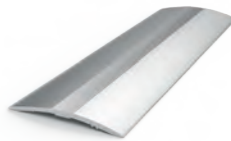
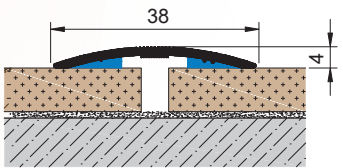


- A01 AKP
- A02
- A03
- A04
- A05
- A06

2,7 mt 20 pcs




BEC 3804



- A01 AKP
- A02
- A03
- A04
- A05
- A06

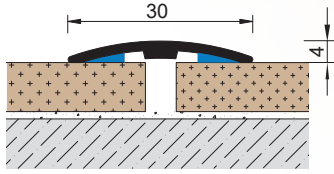
2,7 mt 20 pcs




Please ask for stock info

Item No

BEP 3004



Material / Color

Length

Packing Qty.

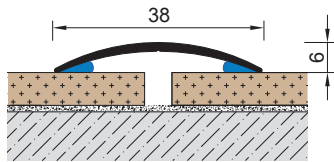
A01	A72
A02	A73
A03	A74
A04	A05
A70	A06
A71	AKP

2,7 mt

20 pcs



BEP 3806



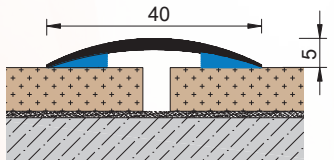
A01	A72
A02	A73
A03	A74
A04	A05
A70	A06
A71	AKP

2,7 mt

20 pcs



BEP 4005



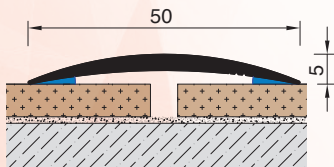
A01	A72
A02	A73
A03	A74
A04	A05
A70	A06
A71	AKP

2,7 mt

20 pcs



BEP 5005



A01	A72
A02	A73
A03	A74
A04	A05
A70	A06
A71	AKP

2,7 mt

20 pcs



Please ask for stock info

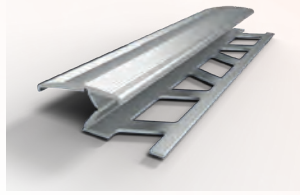
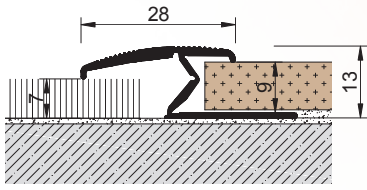


Item No		Material / Color	Length	Packing Qty.	
BGPC 2008			<ul style="list-style-type: none"> A01 A02 A03 A04 A05 A06 AKP 	2,7 mt	20 pcs
BGP 1409			<ul style="list-style-type: none"> A01 A02 A03 A04 A05 A06 AKP 	2,7 mt	20 pcs
BGP 2507			<ul style="list-style-type: none"> A01 A02 A03 A04 A05 A06 AKP 	2,7 mt	20 pcs
BGP 1509			<ul style="list-style-type: none"> SS01 SS02 SS03 SS04 SS05 SS06 SS07 SS08 SS21 	2,5 mt 2,44 mt	10 pcs
BGP 2608			<ul style="list-style-type: none"> SS01 SS02 SS03 SS04 SS05 SS06 SS07 SS08 SS21 	2,5 mt 2,44 mt	10 pcs

Please ask for stock info

Item No

BKC 2813



Material / Color

- | | |
|-----|-----|
| A01 | A02 |
| A03 | A04 |
| A05 | A06 |
| AKP | |

Length

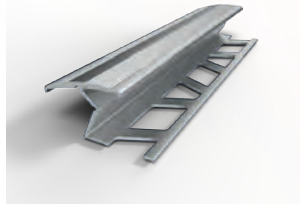
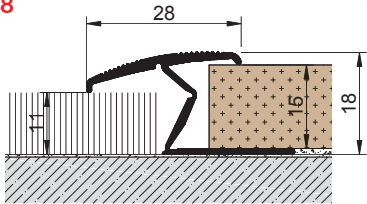
2,7 mt

Packing Qty.

20 pcs



BKC 2818



Material / Color

- | | |
|-----|-----|
| A01 | A02 |
| A03 | A04 |
| A05 | A06 |
| AKP | |

Length

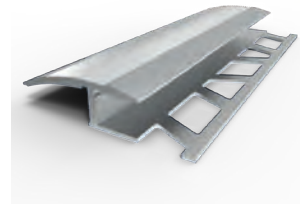
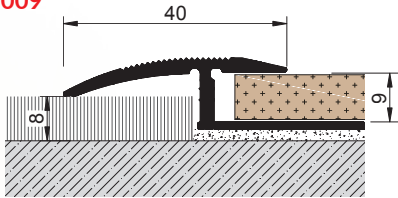
2,7 mt

Packing Qty.

20 pcs



BKF 4009



Material / Color

- | | |
|-----|-----|
| A01 | A02 |
| A03 | A04 |
| A05 | A06 |
| AKP | |

Length

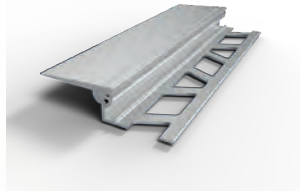
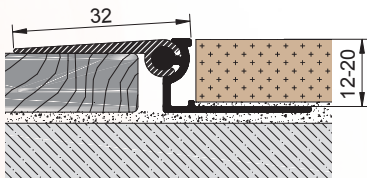
2,7 mt

Packing Qty.

20 pcs



BKF 3212-20



Material / Color

- | | |
|-----|-----|
| A01 | A02 |
| A03 | A04 |
| A05 | A06 |
| AKP | |

Length

2,7 mt

Packing Qty.

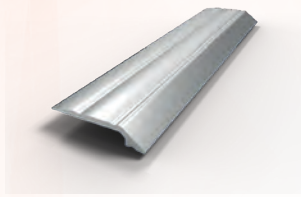
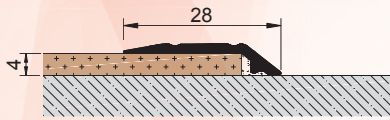
20 pcs



Please ask for stock info

Item No

BKF 2804



Material / Color

- A01
- A02
- A03
- A04
- A05
- A06
- AKP

Length

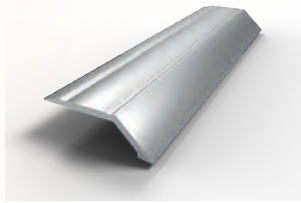
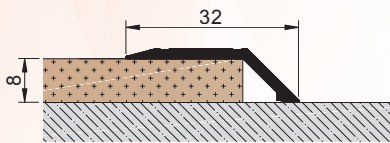
2,7 mt

Packing Qty.

20 pcs



BKF 3208



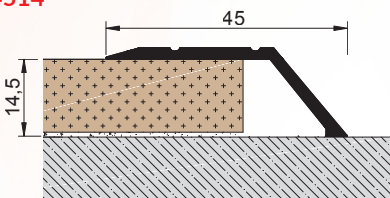
- A01
- A02
- A03
- A04
- A05
- A06
- AKP

2,7 mt

20 pcs



BKF 4514



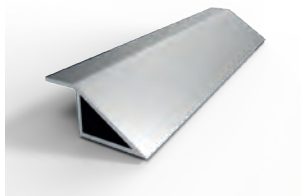
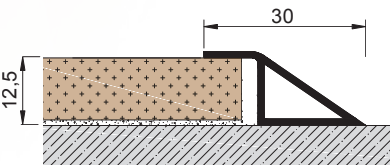
- A01
- A02
- A03
- A04
- A05
- A06
- AKP

2,7 mt

20 pcs



BKF 3012



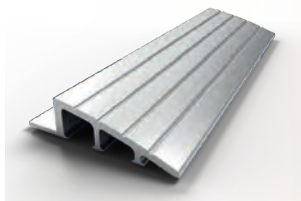
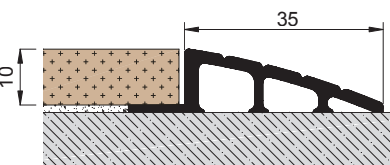
- A01
- A02
- A03
- A04
- A05
- A06
- AKP

2,7 mt

20 pcs



HPS 3510



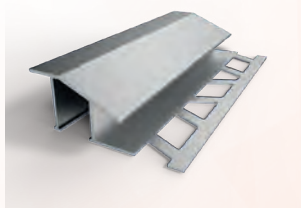
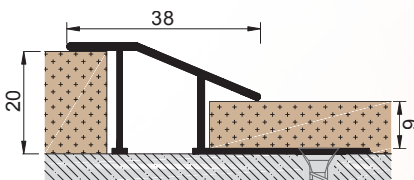
- A01
- A02
- A03
- A04
- A05
- A06
- AKP

2,7 mt

20 pcs



BKF 3820



- A01
- A02
- A03
- A04
- A05
- A06
- AKP

2,7 mt

10 pcs



Please ask for stock info

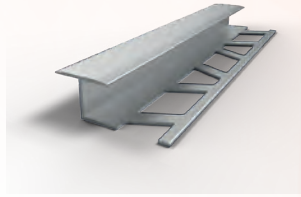
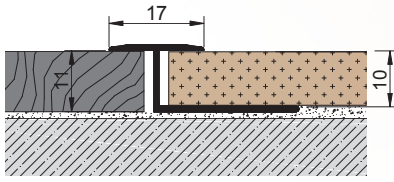
Item No

Material / Color

Length

Packing Qty.

BGP 1710



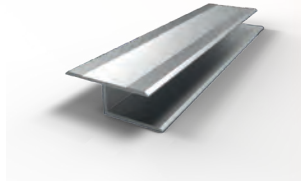
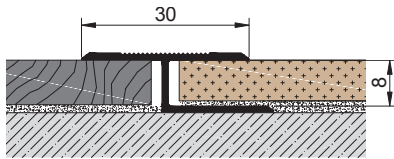
A01	A02
A03	A04
A05	A06
AKP	

2,7 mt

20 pcs



BGP 3008



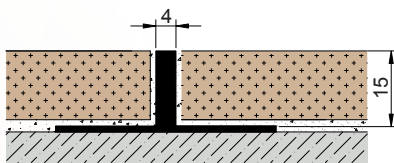
A01	A02
A03	A04
A05	A06
AKP	

2,7 mt

20 pcs



BGP 1504



A01	A02
A03	A04
A05	A06
AKP	

2,7 mt

20 pcs



Please ask for stock info



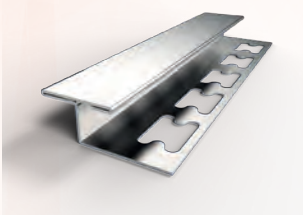
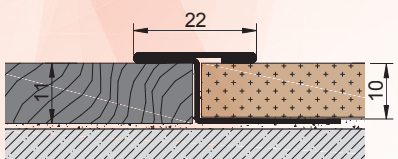
Item No

Material / Color

Length

Packing Qty.

BGP 2210



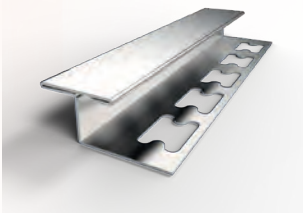
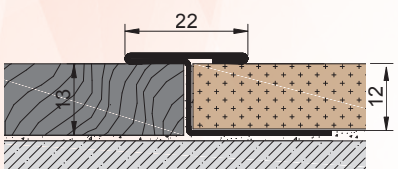
SS01	SS05
SS02	SS06
SS03	SS07
SS04	SS08
	SS21

2,5 mt
2,44 mt

10 pcs



BGP 2212



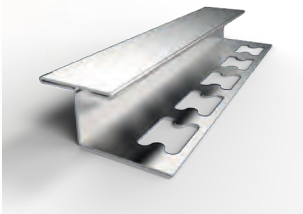
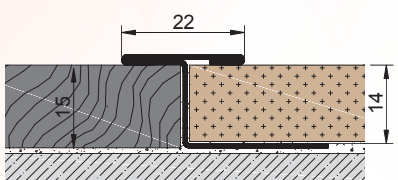
SS01	SS05
SS02	SS06
SS03	SS07
SS04	SS08
	SS21

2,5 mt
2,44 mt

10 pcs



BGP 2214



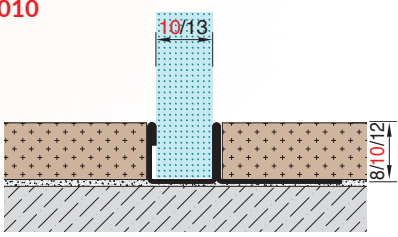
SS01	SS05
SS02	SS06
SS03	SS07
SS04	SS08
	SS21

2,5 mt
2,44 mt

10 pcs



BEF 1010



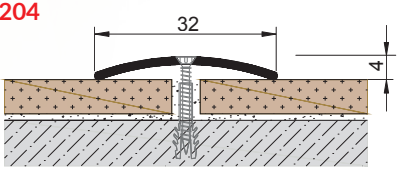
SS01	SS05
------	------

2,5 mt

10 pcs



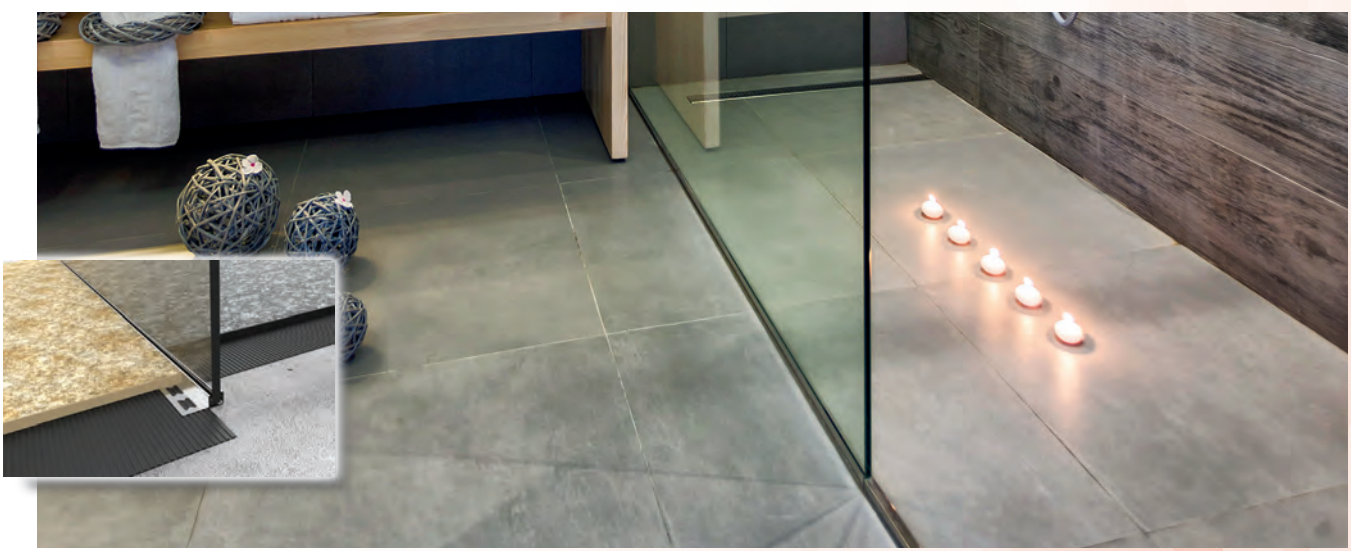
BEP 3204



SS01	SS06
	SS21

2,5 mt
2,44 mt

10 pcs



Please ask for stock info



Movement Control Joints

Asdekor movement control joints are produced in aluminum, stainless steel, pvc and brass. They absorb the stress caused by the system movements and prevent the cracks at wide floor coverings.

MOVEMENT CONTROL JOINTS

Aluminium Movement Control Joints

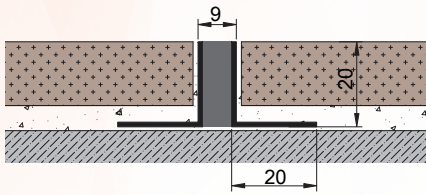
Aluminum movement control joints are manufactured in mill finish or silver anodized aluminum with EPDM.



Movement Control Joints

Item No

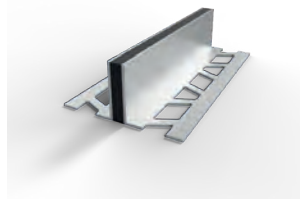
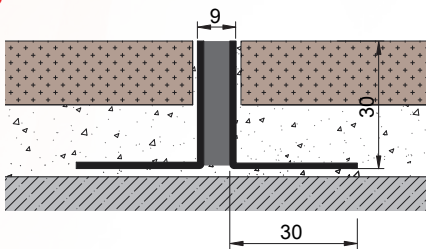
BCD 0920



Material / Color Length Packing Qty.

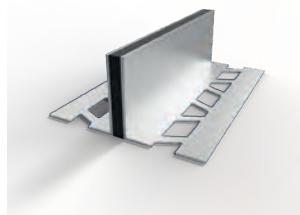
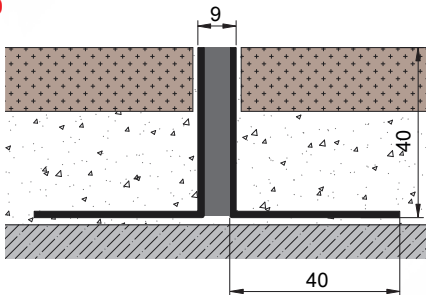
	A00		E33	3 mt	20 pcs
	A01				

BCD 0930



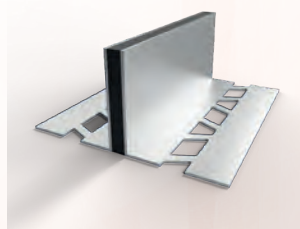
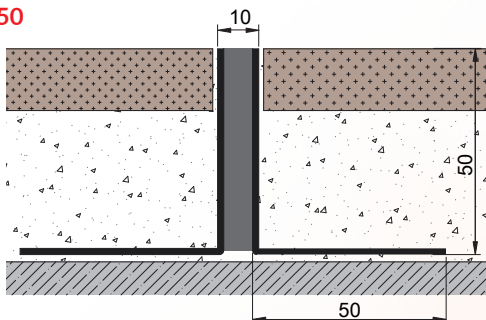
	A00		E33	3 mt	20 pcs
	A01				

BCD 0940



	A00		E33	3 mt	10 pcs
	A01				

BCD 1050



	A00		E33	3 mt	10 pcs
	A01				

Please ask for stock info

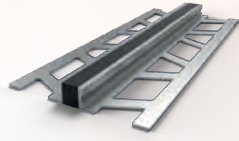
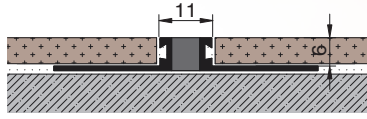
Item No

Material / Color

Length

Packing Qty.

BCD 1106



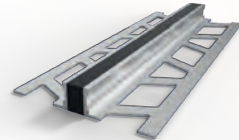
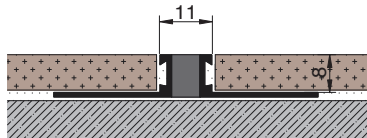
A00 E33
 A01

2,5 mt

20 pcs



BCD 1108



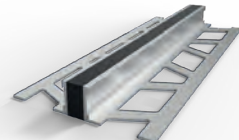
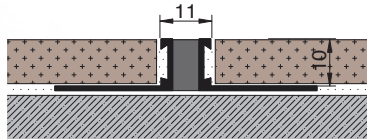
A00 E33
 A01

2,5 mt

20 pcs



BCD 1110



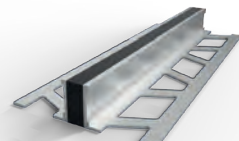
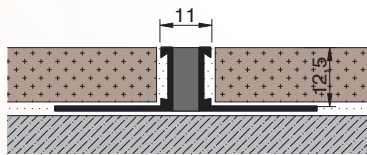
A00 E33
 A01

2,5 mt

20 pcs



BCD 1112



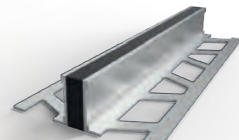
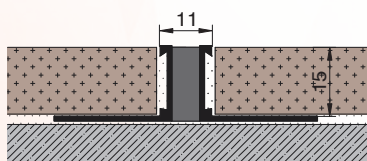
A00 E33
 A01

2,5 mt

20 pcs



BCD 1115



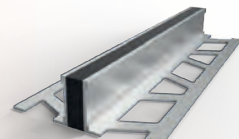
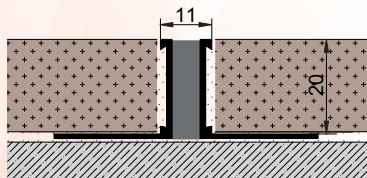
A00 E33
 A01

2,5 mt

20 pcs



BCD 1120



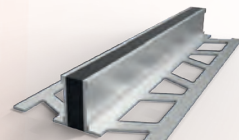
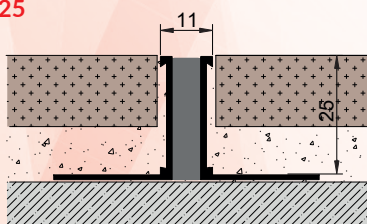
A00 E33
 A01

2,5 mt

20 pcs



BCD 1125



A00 E33
 A01

2,5 mt

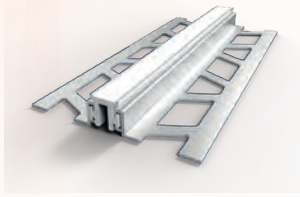
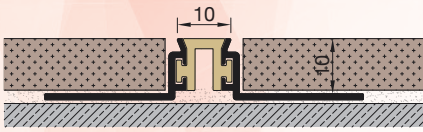
20 pcs



Please ask for stock info

Item No

BCD 1010



Material / Color

- A00
- P30
- A01
- P32
- P33
- P38

Length

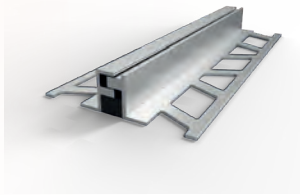
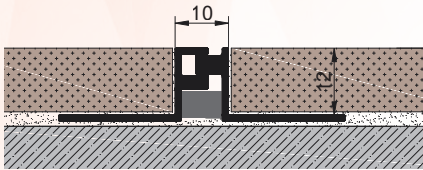
2,7 mt

Packing Qty.

20 pcs



BCD 1012



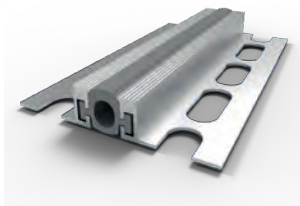
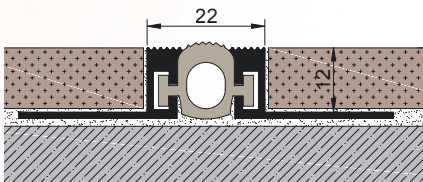
- A00
- E33
- A01

3 mt

20 pcs



BCD 2212



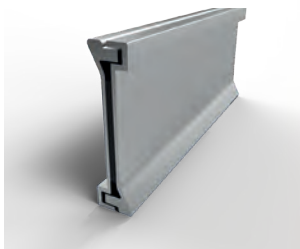
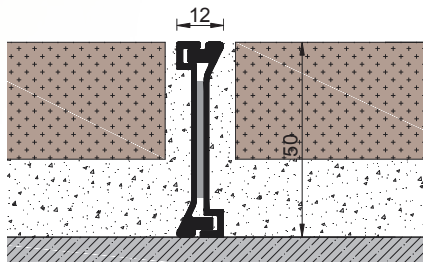
- A00
- T32
- A01
- T33
- T38
- E33

3 mt

20 pcs



BCD 1250



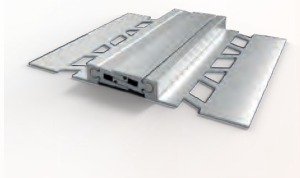
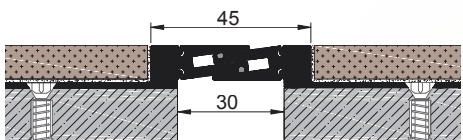
- A00
- E33
- A01

3 mt

20 pcs



AS A227L 030



- A00
- E33
- A01

3 mt

10 pcs



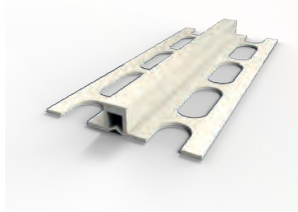
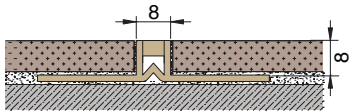
Please ask for stock info

PVC movement control joints are manufactured in PVC. Ideal for pedestrian traffic.



Item No

BCD 0808



Material / Color

Length

Packing Qty.

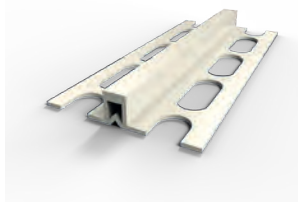
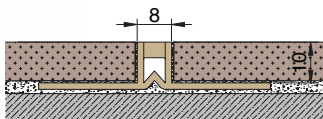
- P32
- P33
- P35
- P38

2,5 mt

40 pcs



BCD 0810



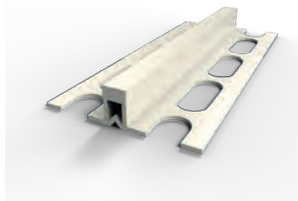
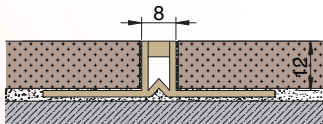
- P32
- P33
- P35
- P38

2,5 mt

40 pcs



BCD 0812



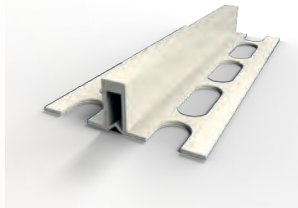
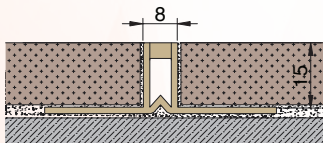
- P32
- P33
- P35
- P38

2,5 mt

40 pcs



BCD 0815



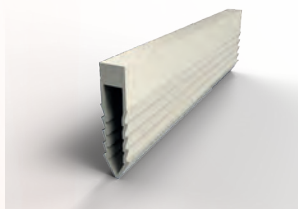
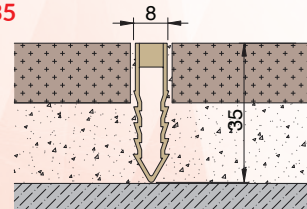
- P32
- P33
- P35
- P38

2,5 mt

40 pcs



BCD 0835



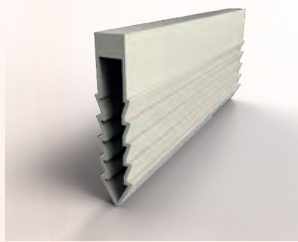
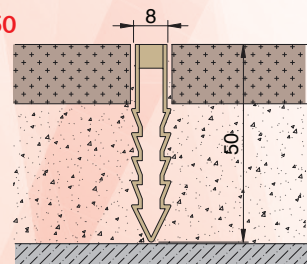
- P32
- P33
- P35
- P38

2,5 mt

40 pcs



BCD 0850



- P32
- P33
- P35
- P38

2,5 mt

40 pcs



Please ask for stock info

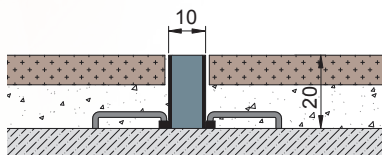




Vulcanized Movement Control Joints are manufactured in aluminum, stainless steel and brass with vulcanized EPDM insert. Metal bands on both sides are joined homogeneously with elastic EPDM insert by hot pressure vulcanization process. This process is considered to be the firmest joint manufacturable and prevents dust and dirt leaching in to the profile and gains the profile water & UV resistance.

Item No

BCDA 1020



Material / Color

Length Packing Qty.

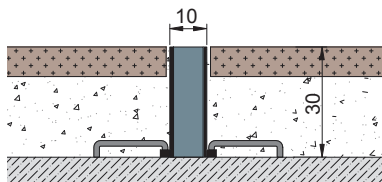
- A00
- SS01
- PP30
- E32
- E33
- E38

2,5 mt

10 pcs



BCDA 1030



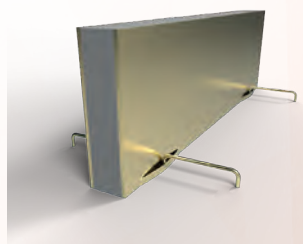
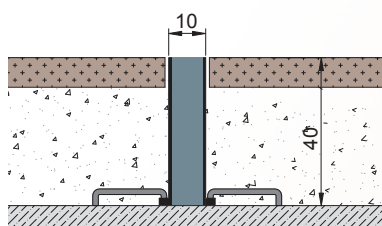
- A00
- SS01
- PP30
- E32
- E33
- E38

2,5 mt

10 pcs



BCDA 1040



- A00
- SS01
- PP30
- E32
- E33
- E38

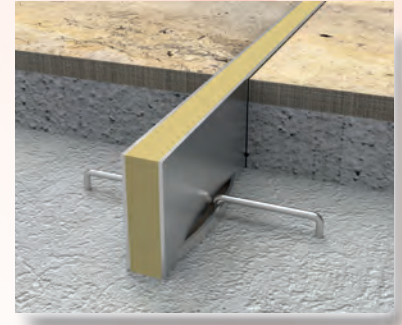
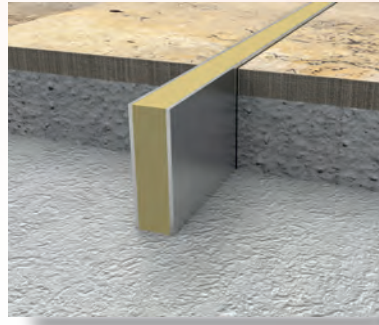
2,5 mt

10 pcs



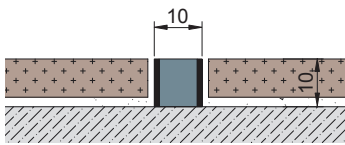
Please ask for stock info

BCDA & BCDK series can be manufactured in aluminium, stainless steel or brass depending on the anticipated chemical, mechanical, electro-chemical or any other load to which the floor could be exposed. Recommended for mortar-laid floors.



Item No

BCDK 1010



Material / Color

Length

Packing Qty.

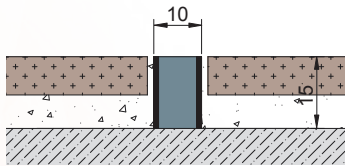
- A00
- E32
- SS01
- E33
- PP30
- E38

2,5 mt

10 pcs



BCDK 1015



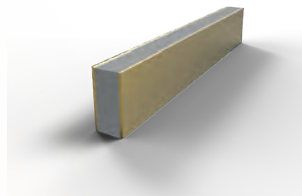
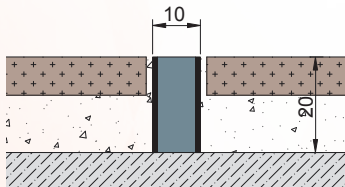
- A00
- E32
- SS01
- E33
- PP30
- E38

2,5 mt

10 pcs



BCDK 1020



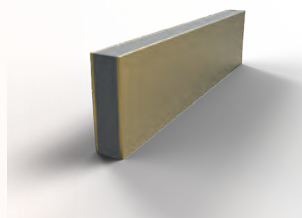
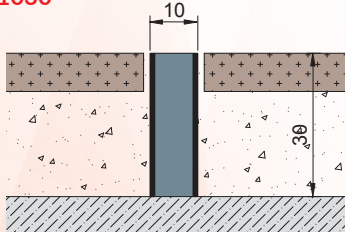
- A00
- E32
- SS01
- E33
- PP30
- E38

2,5 mt

10 pcs



BCDK 1030



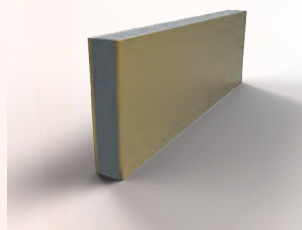
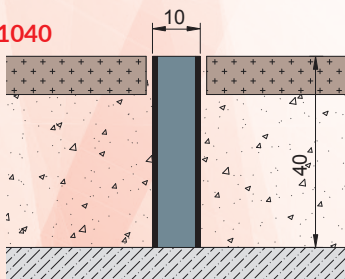
- A00
- E32
- SS01
- E33
- PP30
- E38

2,5 mt

10 pcs



BCDK 1040



- A00
- E32
- SS01
- E33
- PP30
- E38

2,5 mt

10 pcs



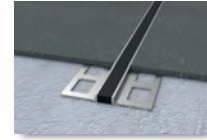
Please ask for stock info

Movement Control Joints

MOVEMENT CONTROL JOINTS

Vulcanized Movement Control Joints

Extruded aluminium vulcanized movement control joints at 2, 3 and 5 mm heights are applied at epoxy, vinyl, linoleum and PVC coated floors. They prevent the cracking of epoxy coating and give a decorative aspect, economize the labor cost and save time during epoxy application.

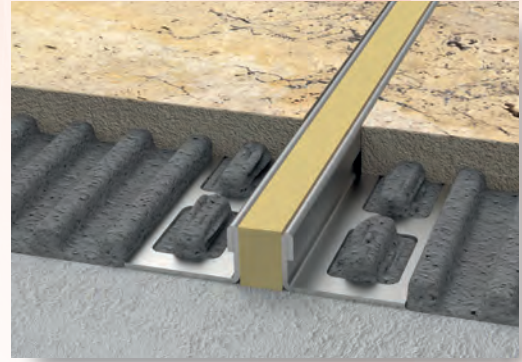


Movement Control Joints

Item No		Material / Color	Length	Packing Qty.
BCDL 1002			2,5 mt	20 pcs
BCDL 1003			2,5 mt	20 pcs
BCDL 1005			2,5 mt	20 pcs
BCDL 1006			2,5 mt	10 pcs
BCDL 1008			2,5 mt	10 pcs
BCDL 1010			2,5 m	10 pcs
BCDL 1012			2,5 mt	10 pcs
BCDL 1015			2,5 mt	10 pcs
BCDL 1020			2,5 mt	10 pcs
BCDL 1025			2,5 mt	10 pcs

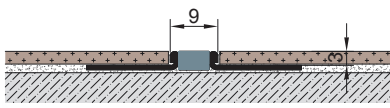
Please ask for stock info

Stainless steel vulcanized movement control joints in 0.8 mm thickness are highly recommended to be used in hygiene required and wet floor areas. Apart from the mechanical loads, they are resistant to chemical stress like acid or lye (e.g. strong detergents or salting the surface in winter).



Item No

BCDL 0903



Material / Color

Length

Packing Qty.

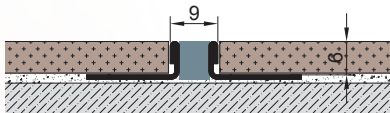
SS01	E32
	E33
	E38

2,5 mt

10 pcs



BCDL 0906



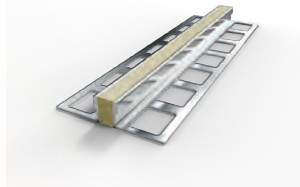
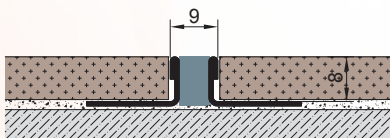
SS01	E32
	E33
	E38

2,5 mt

10 pcs



BCDL 0908



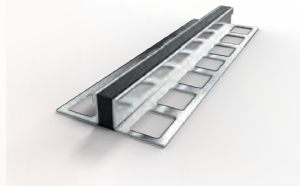
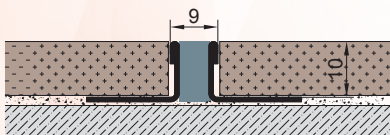
SS01	E32
	E33
	E38

2,5 mt

10 pcs



BCDL 0910



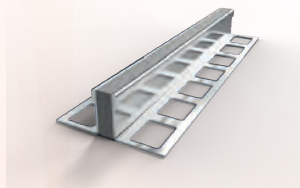
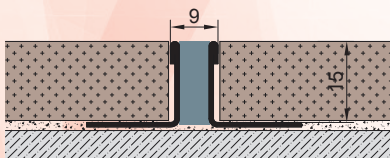
SS01	E32
	E33
	E38

2,5 mt

10 pcs



BCDL 0915



SS01	E32
	E33
	E38

2,5 mt

10 pcs



Please ask for stock info

Movement Control Joints



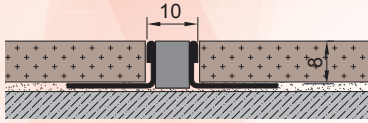
Item No

Material / Color

Length

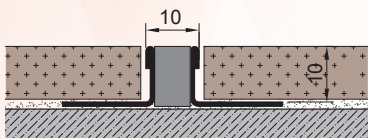
Packing Qty.

BCDV 1008



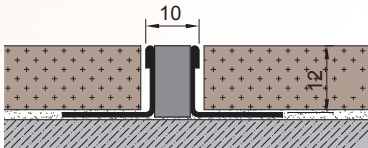
SS01	E32	2,5 mt	10 pcs
	E33		
	E38		

BCDV 1010



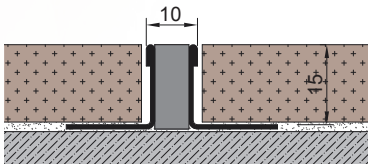
SS01	E32	2,5 mt	10 pcs
	E33		
	E38		

BCDV 1012



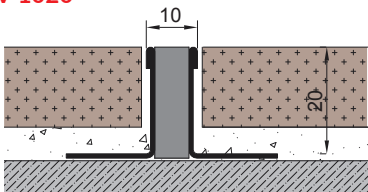
SS01	E32	2,5 mt	10 pcs
	E33		
	E38		

BCDV 1015



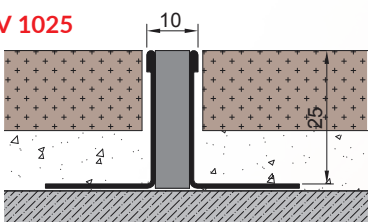
SS01	E32	2,5 mt	10 pcs
	E33		
	E38		

BCDV 1020



SS01	E32	2,5 mt	10 pcs
	E33		
	E38		

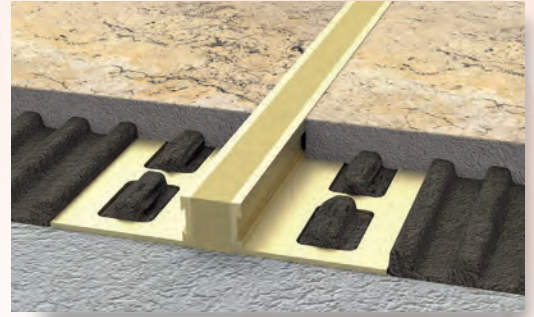
BCDV 1025



SS01	E32	2,5 mt	10 pcs
	E33		
	E38		

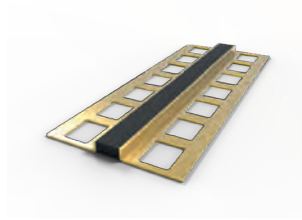
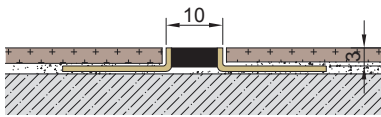
Please ask for stock info

Mill brass in 1 mm thickness vulcanized movement control joints have a great resistance to mechanical loads as well as chemical stress.



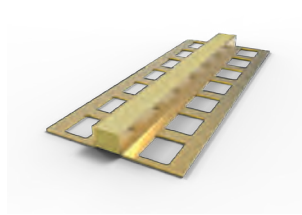
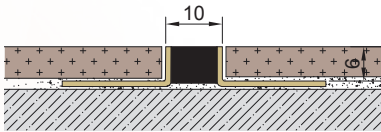
Item No

BCDS 1003



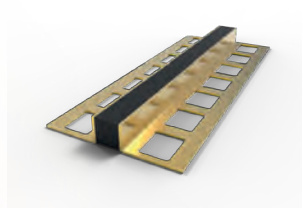
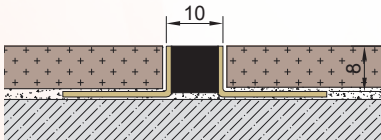
Material / Color		Length	Packing Qty.
PP00	E32	2 mt	10 pcs
	E33		
	E38		

BCDS 1006



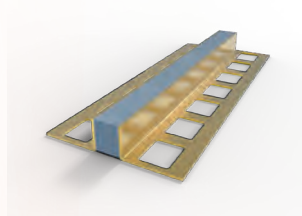
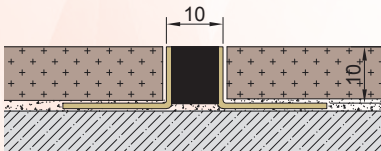
PP00	E32	2 mt	10 pcs
	E33		
	E38		

BCDS 1008



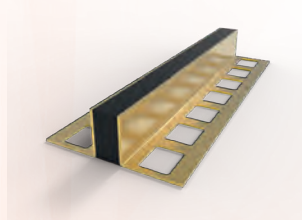
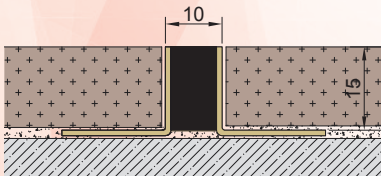
PP00	E32	2 mt	10 pcs
	E33		
	E38		

BCDS 1010



PP00	E32	2 mt	10 pcs
	E33		
	E38		

BCDS 1015

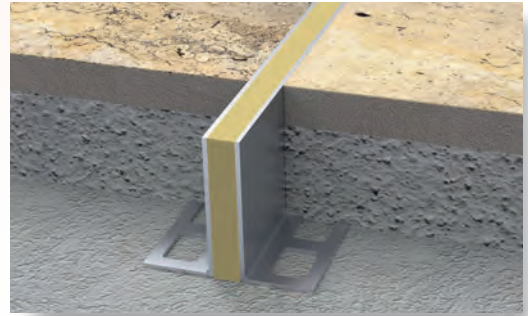


PP00	E32	2 mt	10 pcs
	E33		
	E38		

Please ask for stock info

Movement Control Joints

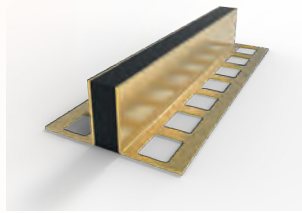
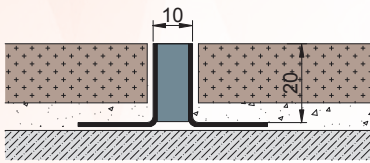
Aluminium mill finish, stainless steel and brass vulcanized movement control joints.



Movement Control Joints

Item No

BCDM 1020



Material / Color

- A00 E32
- SS01 E33
- PP00 E38

Length

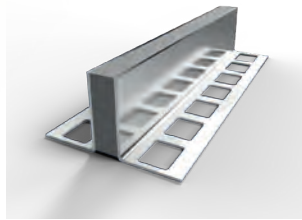
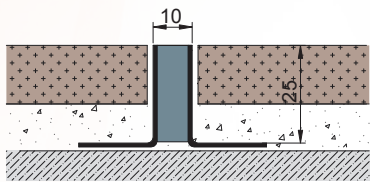
2,5 mt
2 mt

Packing Qty.

10 pcs



BCDM 1025



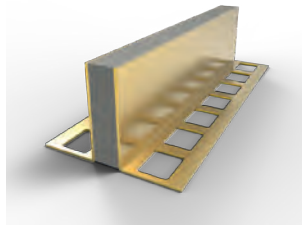
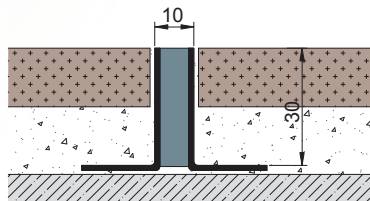
- A00 E32
- SS01 E33
- PP00 E38

2,5 mt
2 mt

10 pcs



BCDM 1030



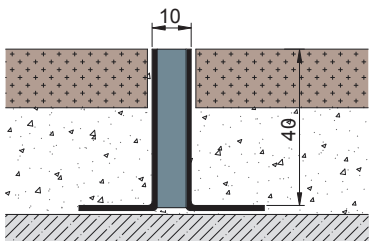
- A00 E32
- SS01 E33
- PP00 E38

2,5 mt
2 mt

10 pcs



BCDM 1040



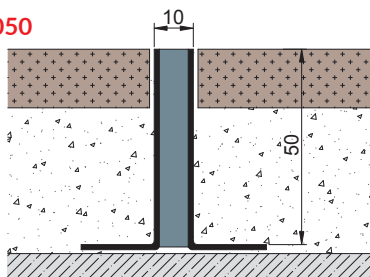
- A00 E32
- SS01 E33
- E38

2,5 mt

10 pcs



BCDM 1050



- A00 E32
- SS01 E33
- E38

2,5 mt

10 pcs



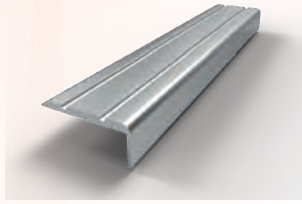
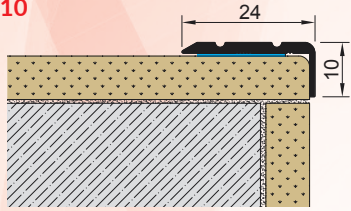
Please ask for stock info



Asdekor stair nosing profiles are produced in aluminium, stainless steel and pvc. They prevent wearing and slipping at the steps and protect the edges against impacts. They can be fixed on the ground with screw and butyl tape.

Item No

BMB 2410



Material / Color

- | | |
|-----|-----|
| A01 | A05 |
| A02 | A06 |
| A03 | AKP |
| A04 | |

Length

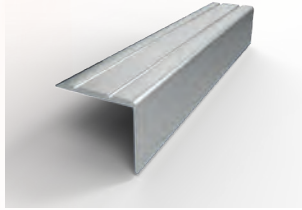
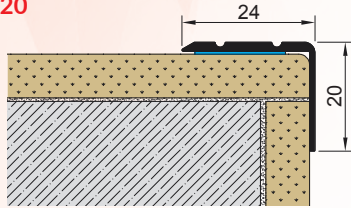
2,7 mt

Packing Qty.

20 pcs



BMB 2420



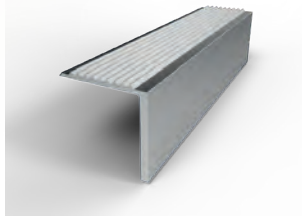
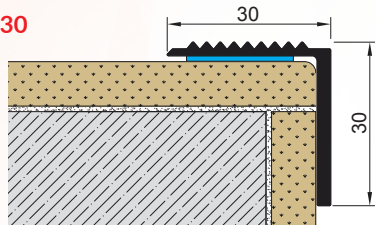
- | | |
|-----|-----|
| A01 | A05 |
| A02 | A06 |
| A03 | AKP |
| A04 | |

2,7 mt

20 pcs



BMB 3030



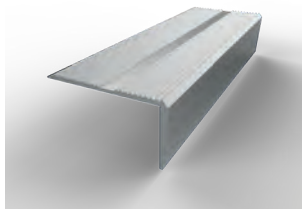
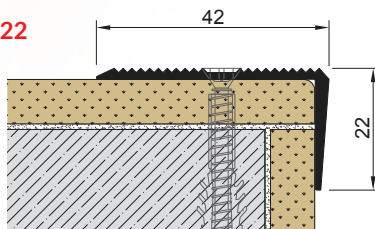
- | | |
|-----|-----|
| A01 | A05 |
| A02 | A06 |
| A03 | AKP |
| A04 | |

3 mt

10 pcs



BMB 4222



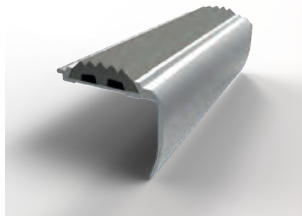
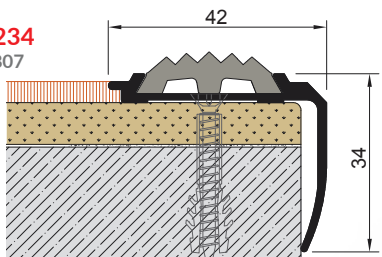
- | | |
|-----|-----|
| A01 | A05 |
| A02 | A06 |
| A03 | AKP |
| A04 | |

3 mt

10 pcs



BMB 4234
+ BMB 2807



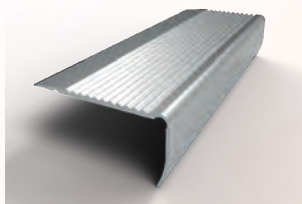
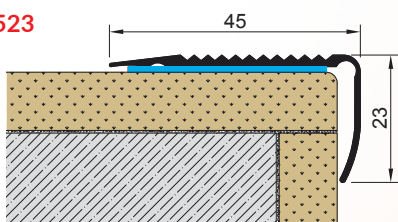
- | | |
|-----|-----|
| A01 | P33 |
| A02 | P38 |
| A03 | |
| A04 | |

3 mt

10 pcs



BMB 4523



- | | |
|-----|-----|
| A01 | A05 |
| A02 | A06 |
| A03 | AKP |
| A04 | |

3 mt

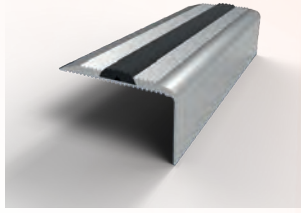
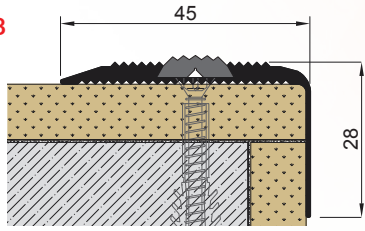
10 pcs



Please ask for stock info

Item No

BMB 4528
+ BMB X528



Material / Color

- | | | | |
|--|-----|--|-----|
| | A01 | | A05 |
| | A02 | | A06 |
| | A03 | | AKP |
| | A04 | | E33 |

Length

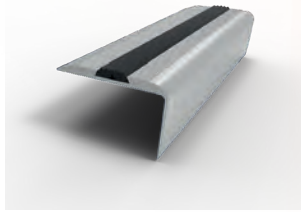
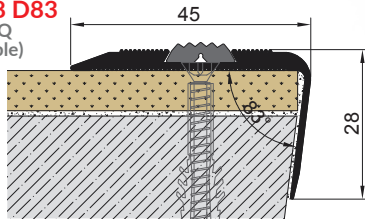
3 mt

Packing Qty.

10 pcs



BMB 4528 D83
+ BMB X528Q
(non flammable)



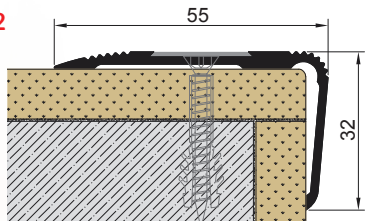
- | | | | |
|--|-----|--|-----|
| | A01 | | A05 |
| | A02 | | A06 |
| | A03 | | AKP |
| | A04 | | E33 |

3 mt

10 pcs



BMB 5532
+BMB 1900



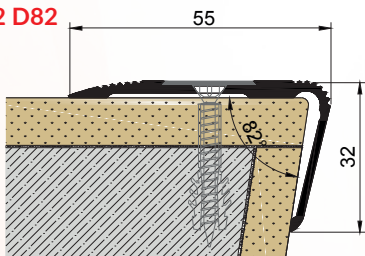
- | | | | |
|--|-----|--|-----|
| | A01 | | A05 |
| | A02 | | A06 |
| | A03 | | AKP |
| | A04 | | |

3 mt

10 pcs



BMB 5532 D82
+BMB 1900



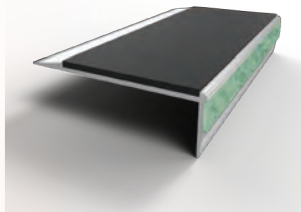
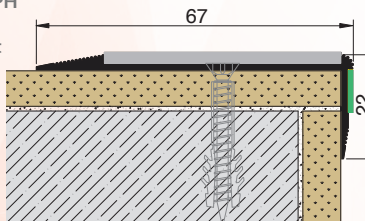
- | | | | |
|--|-----|--|-----|
| | A01 | | A05 |
| | A02 | | A06 |
| | A03 | | AKP |
| | A04 | | |

3 mt

10 pcs



BMB 6722
+ CTP
- BMB 0900PH
can be used
upon request



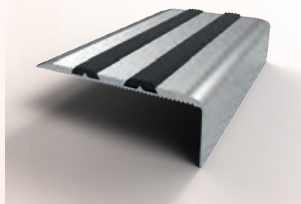
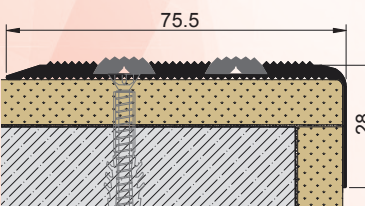
- | | | | |
|--|-----|--|------|
| | A01 | | A05 |
| | A02 | | A06 |
| | A03 | | AKP |
| | A04 | | GCTP |

3 mt

10 pcs



BMB 7528
+ BMB X528



- | | | | |
|--|-----|--|-----|
| | A01 | | A05 |
| | A02 | | A06 |
| | A03 | | AKP |
| | A04 | | E33 |

3 mt

10 pcs



Please ask for stock info

Stair Nosings

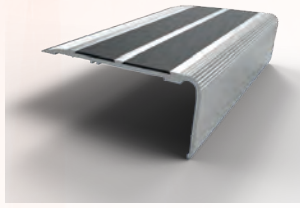
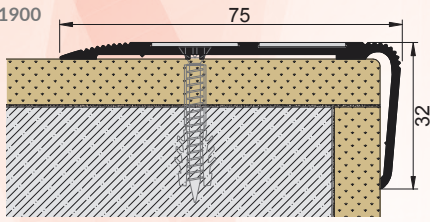
Item No

Material / Color

Length

Packing Qty.

BMB 7532
+BMB 1900



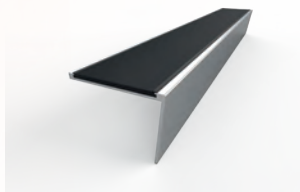
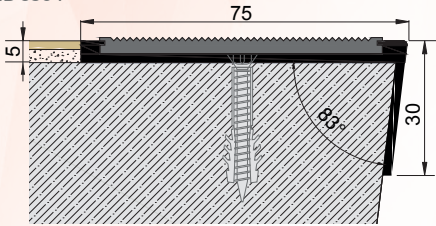
- | | |
|-----|-----|
| A01 | A05 |
| A02 | A06 |
| A03 | AKP |
| A04 | |

3 mt

10 pcs



BMB 7530 D83
+BMB 6504



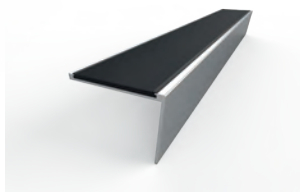
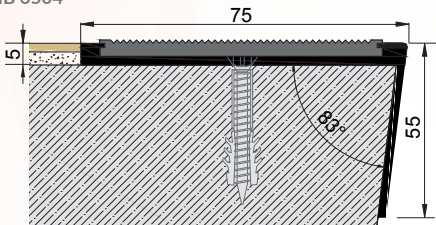
- | | |
|-----|-----|
| A01 | A05 |
| A02 | A06 |
| A03 | AKP |
| A04 | E33 |

3 mt

10 pcs



BMB 7555 D83
+BMB 6504



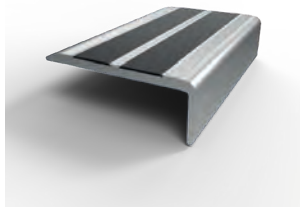
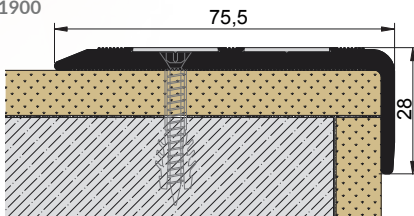
- | | |
|-----|-----|
| A01 | A05 |
| A02 | A06 |
| A03 | AKP |
| A04 | E33 |

3 mt

10 pcs



BMB 7628
+BMB 1900



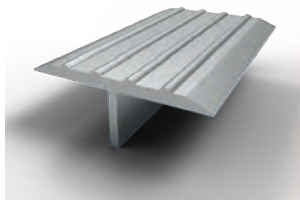
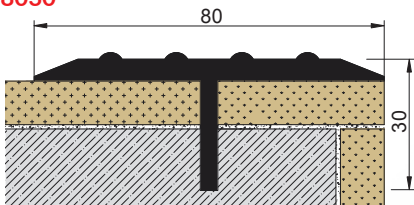
- | | |
|-----|-----|
| A01 | A05 |
| A02 | A06 |
| A03 | AKP |
| A04 | |

3 mt

10 pcs



BMB 8030



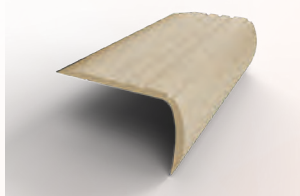
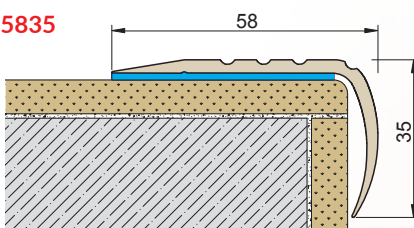
- | | |
|-----|-----|
| A01 | A05 |
| A02 | A06 |
| A03 | AKP |
| A04 | |

3 mt

10 pcs



BMB 5835



- | |
|-----|
| P32 |
| P33 |
| P35 |
| P38 |

3 mt

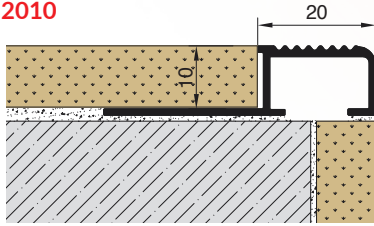
40 pcs



Please ask for stock info

Item No

BMB 2010



Material / Color

- | | |
|-----|-----|
| A01 | A05 |
| A02 | A06 |
| A03 | AKP |
| A04 | |

Length

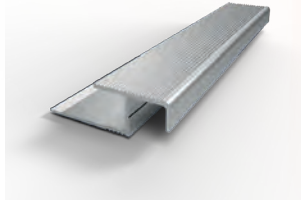
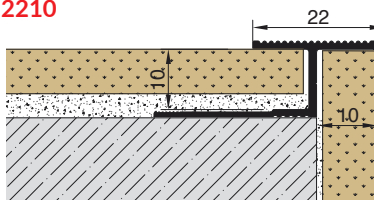
2.5 mt

Packing Qty.

20 pcs



BMB 2210



- | | |
|-----|-----|
| A01 | A05 |
| A02 | A06 |
| A03 | AKP |
| A04 | |

3 mt

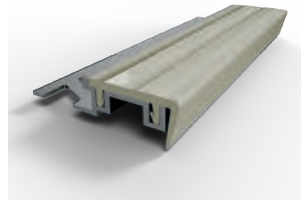
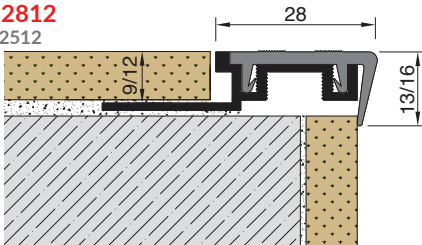
20 pcs



BMB 2809

BMB 2812

+BMB 2512



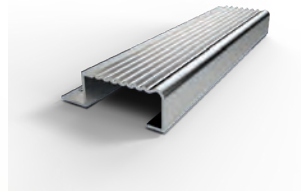
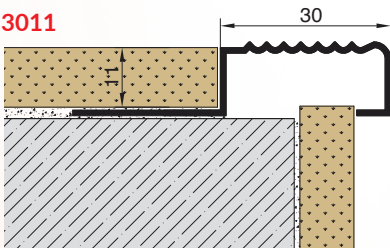
- | | |
|-----|-----|
| A00 | P32 |
| | P33 |
| | P35 |
| | P38 |

3 mt

10 pcs



BMB 3011



- | | |
|------|------|
| SS01 | SS05 |
|------|------|

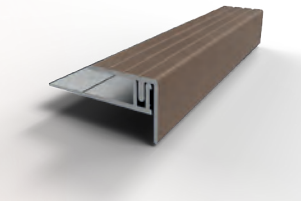
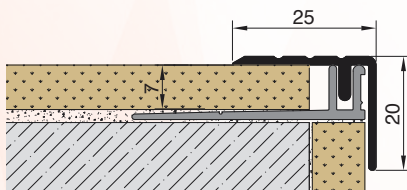
2.5 mt

10 pcs



BMB 2520

+BAP 4007



- | | |
|-----|-----|
| A01 | A72 |
| A02 | A73 |
| A03 | A74 |
| A04 | A05 |
| A70 | A06 |
| A71 | AKP |

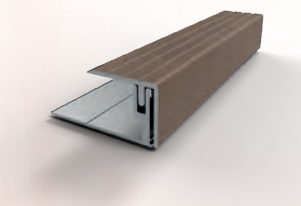
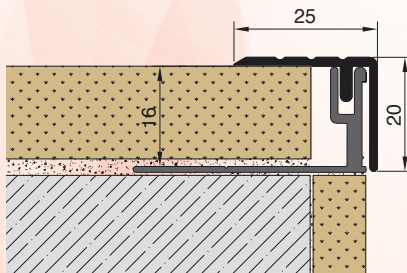
2,7 mt

20 pcs



BMB 2520

+BAP 4016



- | | |
|-----|-----|
| A01 | A72 |
| A02 | A73 |
| A03 | A74 |
| A04 | A05 |
| A70 | A06 |
| A71 | AKP |

2,7 mt

20 pcs

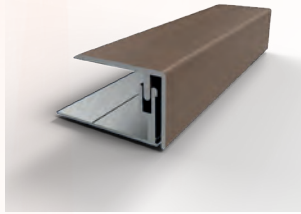
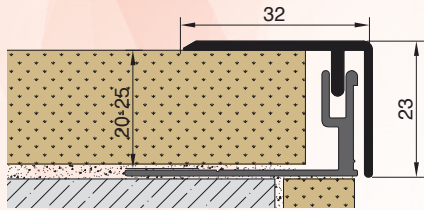


Please ask for stock info

Stair Nosings



Item No
BMB 3223
+BAP 4016

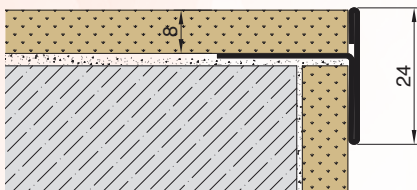


Material / Color

Length Packing Qty.

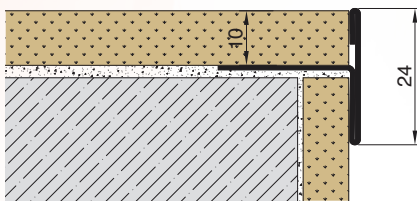
A01	A72	2,7 mt	20 pcs
A02	A73		
A03	A74		
A04	A05		
A70	A06		
A71	AKP		

BMB 0824



SS01	SS05	2,5 mt 2,44 mt	10 pcs
SS02	SS06		
SS03	SS07		
SS04	SS08		
	SS21		

BMB 1024



SS01	SS05	2,5 mt 2,44 mt	10 pcs
SS02	SS06		
SS03	SS07		
SS04	SS08		
	SS21		

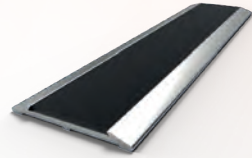
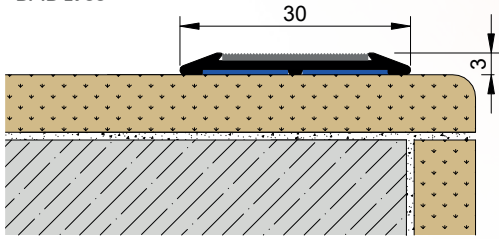
Stair Nosings



Please ask for stock info

Item No

BMB 3003
+BMB 1900



Material / Color

Length Packing Qty.

	A01		A05
	A02		A06
	A03		AKP
	A04		

3 mt

20 pcs



BMB 1900, BMB 2500, BMB 3600, BMB 5000

Anti-Slip tape is made of abrasive minerals applied to a self-adhesive UPU carrier, for quick, durable application in many different conditions. Product can be applied onto almost any surface and instantly provides an anti-slip surface that is ready to walk on.

- 60 grit aluminium oxide surface
- Internal and external application
- Water resistant
- Used for general applications in domestic or commercial environments such as on steps, covering entire walkways



	P33
	P38*
	P63*

25 mt /Roll

-



* Available depending on the quantity

BMB 0900 PH, BMB 1900 PH
Photoluminescent anti slip tape



P11*

15 mt/Roll

-



* Available depending on the quantity

BMB 1900 AS, BMB 2500 AS, BMB 5000 AS
Aqua-safe anti slip tape



	P31*
	P33
	P38*

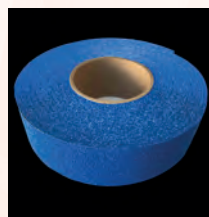
18,3 mt /Roll

-



* Available depending on the quantity

BMB 2500 MR*
Marine anti slip tape



	P33*
	P46*

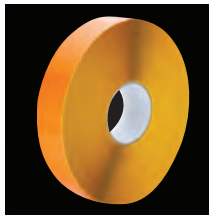
18,3 mt /Roll

-



* Available depending on the quantity

BMB 5000 PS, BMB 7500 PS
5S Floor marking tape



P34*

30 mt /Roll

-



* Available depending on the quantity

* %100 salt resistant, suitable for ship and yacht deck.

Please ask for stock info



Asdekor balcony edge profiles are produced in anodized aluminum as well as in any desired RAL color. They are used at the edges of balconies & terraces.



Balcony & Terrace Profiles

Item No		Material / Color	Length	Packing Qty.
BLP 3090			3 mt	10 pcs
		<ul style="list-style-type: none"> A01 A02 A03 A04 A05 A06 AKP 		
BLP 9266			3 mt	10 pcs
		<ul style="list-style-type: none"> A01 A02 A03 A04 A05 A06 AKP 		
BEK 6115 +BEK 4520			3 mt	10 pcs
	<p>Indoor Terrace & Balcony</p>	<ul style="list-style-type: none"> A01 A02 A03 A04 A05 A06 AKP 		

Please ask for stock info

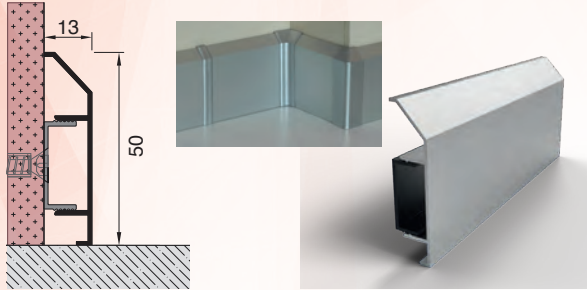


Asdekor skirting profiles are produced in aluminum, stainless steel and pvc. They are used in the wall- floor intersections to protect the wall and paint against crashing of feet and other effects. The skirtings prevent the accumulation of dirt in the corner, cover the defects at the wall-floor joints.

Item No

BSP 1350

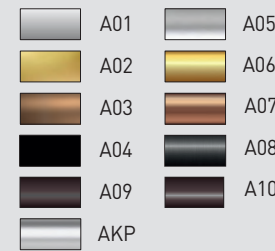
+ BSP 2309
- Corner & end caps are available



Material / Color

Length

Packing Qty.



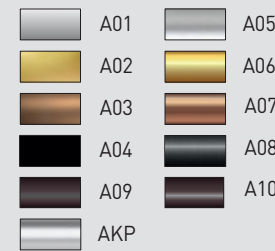
3 mt

10 pcs



BSP 1360

+ BSP 2309
- Corner & end caps are available



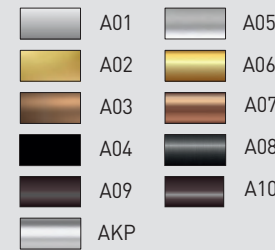
3 mt

10 pcs



BSP 1383

+ BSP 2309
- Corner & end caps are available



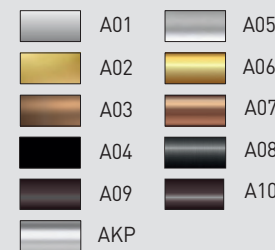
3 mt

10 pcs



BSP 13150

+ BSP 2309



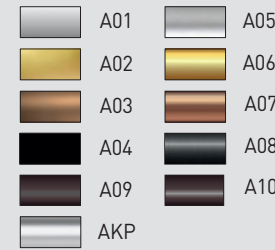
3 mt

10 pcs



BSP 1670

+ BSP 1554



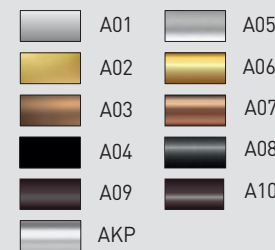
3 mt

10 pcs



BSP 3080

+ BSP 2309



3 mt

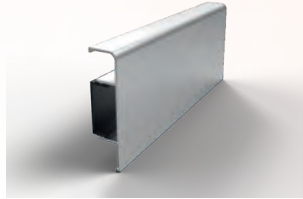
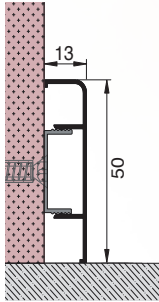
10 pcs



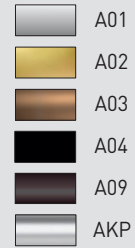
Please ask for stock info

Item No

BSP 13050
+ BSP 2309



Material / Color



Length

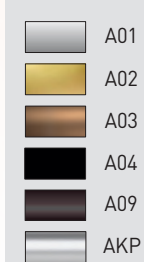
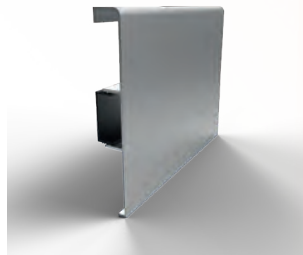
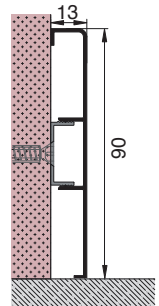
3 mt

Packing Qty.

10 pcs



BSP 13090
+ BSP 2309



Length

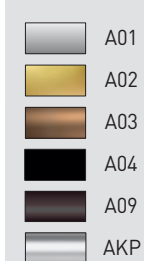
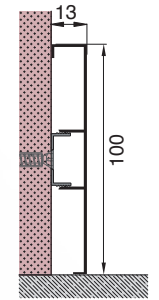
3 mt

Packing Qty.

10 pcs



BSP 13100
+ BSP 2309



Length

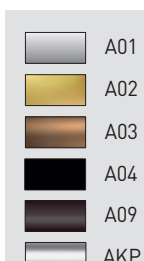
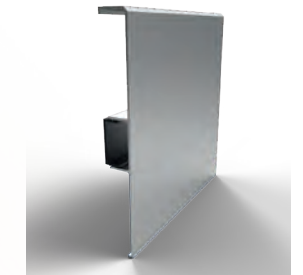
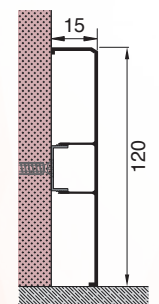
3 mt

Packing Qty.

10 pcs



BSP 15120
+ BSP 2309



Length

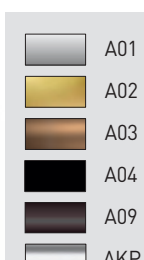
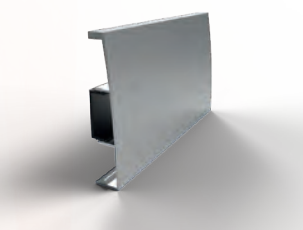
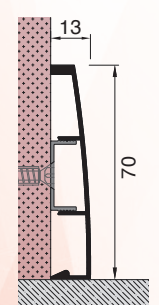
3 mt

Packing Qty.

10 pcs



BSP 1370
+ BSP 2309



Length

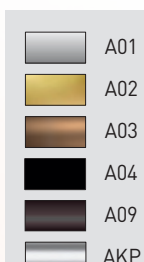
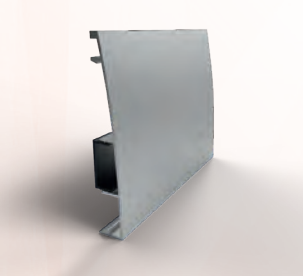
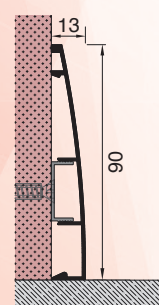
3 mt

Packing Qty.

10 pcs



BSP 1390
+ BSP 2309



Length

3 mt

Packing Qty.

10 pcs



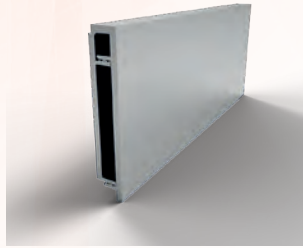
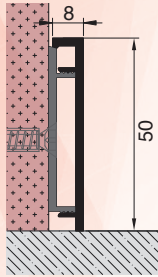
Skirtings



Please ask for stock info

Item No

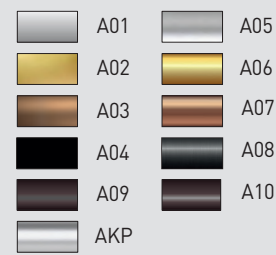
BSP 0850
+ BSP 0742



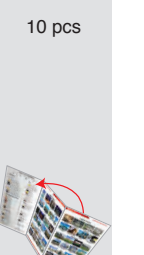
Material / Color

Length

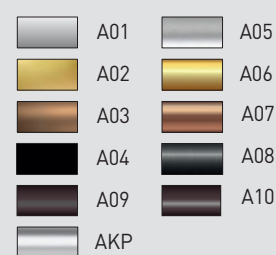
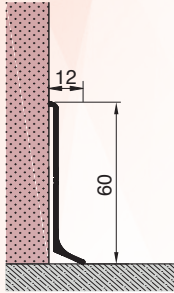
Packing Qty.



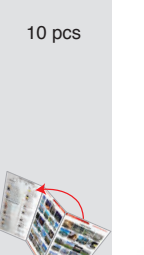
3 mt



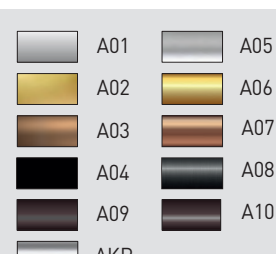
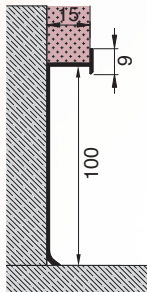
BSP 12060



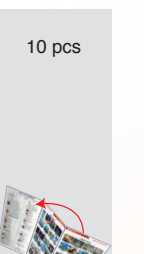
3 mt



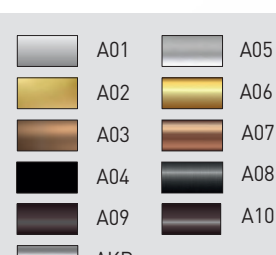
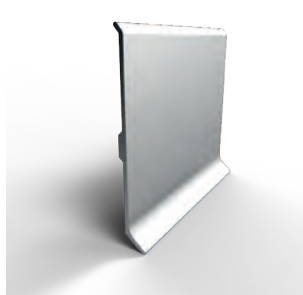
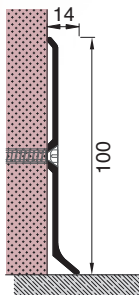
BSP 15100



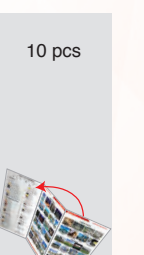
3 mt



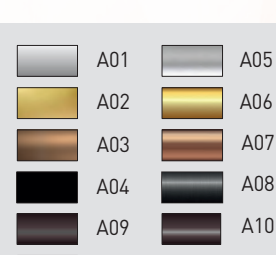
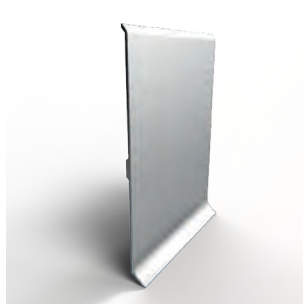
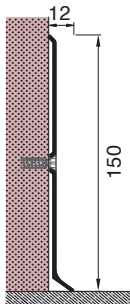
BSP 14100



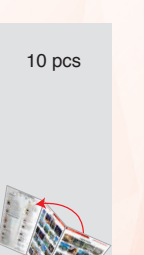
3 mt



BSP 12150



3 mt



Please ask for stock info

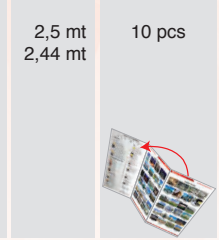
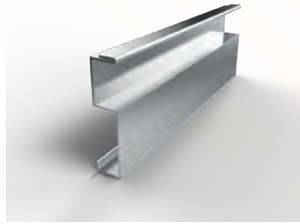
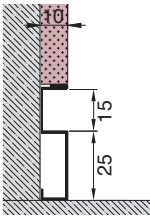


Item No

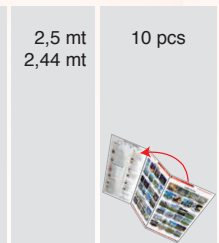
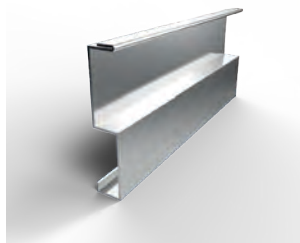
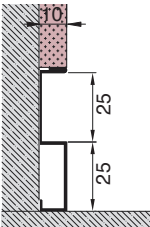
Material / Color

Length Packing Qty.

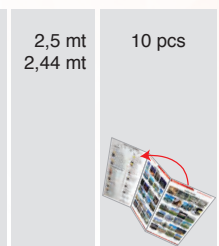
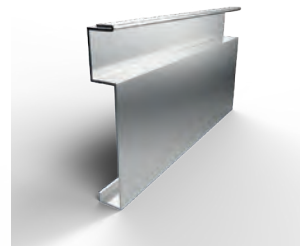
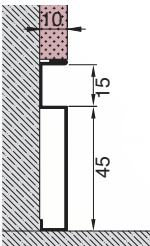
BSP 10025 F15



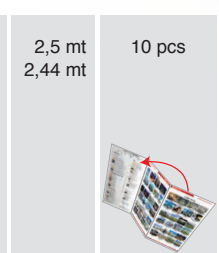
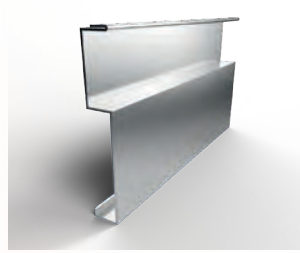
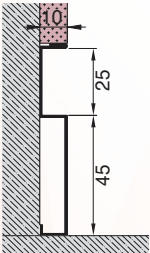
BSP 10025 F25



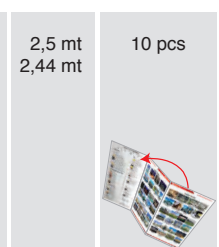
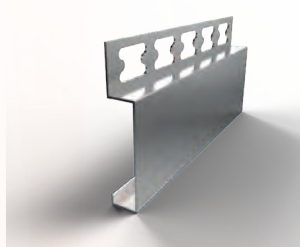
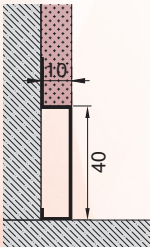
BSP 10045 F15



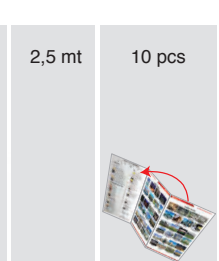
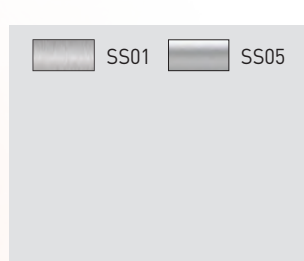
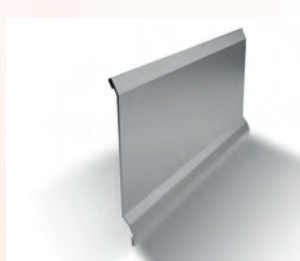
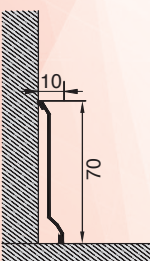
BSP 10045 F25



BSP 10040



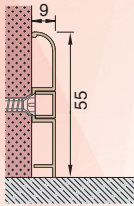
BSP 10070



Please ask for stock info

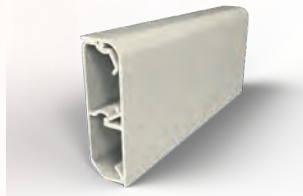
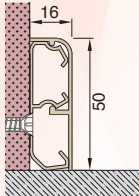


Item No
BSP 0955
- Corner & end caps are available



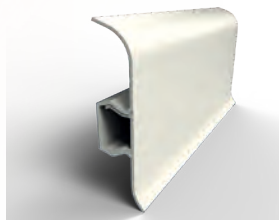
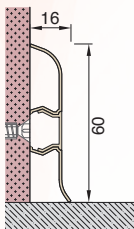
Material / Color		Length	Packing Qty.
P30	P38	2 mt	20 pcs
P32	P44		
P35			

BSP 1650
- Corner & end caps are available



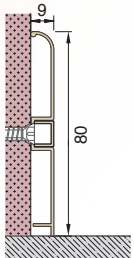
Material / Color		Length	Packing Qty.
P30	P38	2 mt	20 pcs
P32	P44		
P35			

BSP 1660



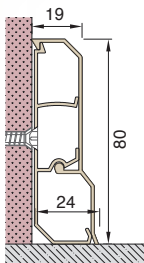
Material / Color		Length	Packing Qty.
P30	P38	2 mt	20 pcs
P32	P44		
P35			

BSP 0980
- Corner & end caps are available



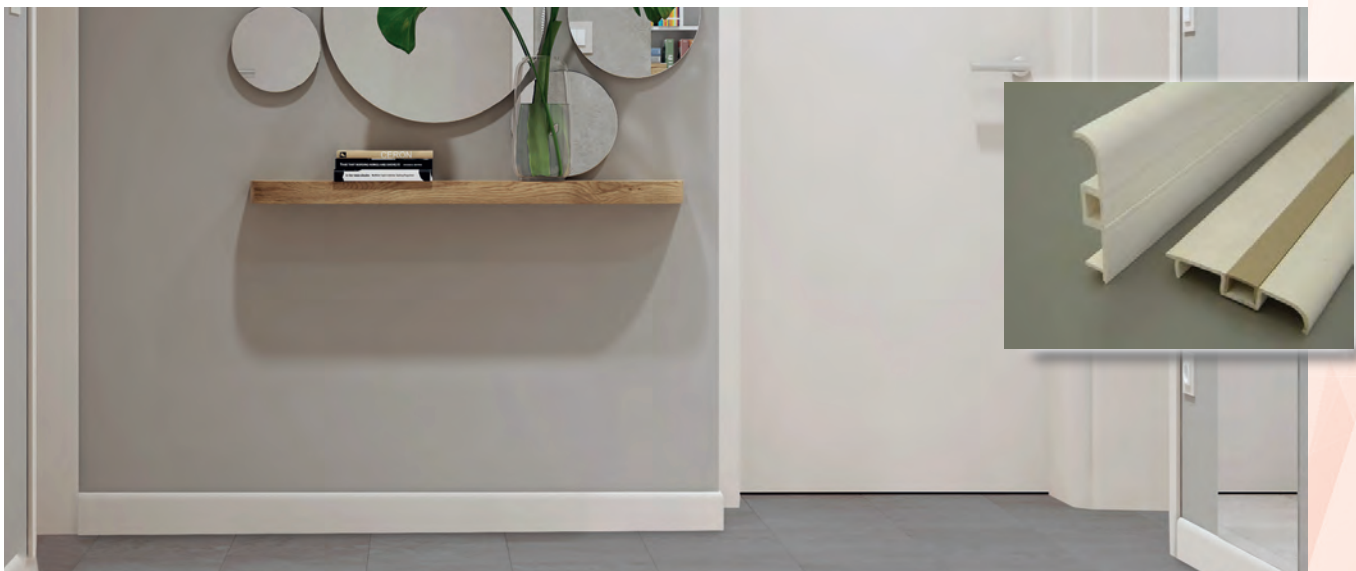
Material / Color		Length	Packing Qty.
P30	P38	2 mt	20 pcs
P32	P44		
P35			

BSP 1980
- Corner & end caps are available



Material / Color		Length	Packing Qty.
P30	P38	2 mt	20 pcs
P32	P44		
P35			

Skirtings



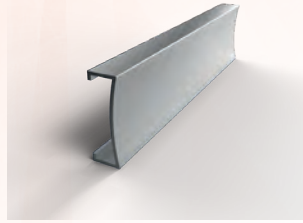
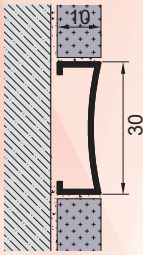
Please ask for stock info

Asdekor decorative border profiles are produced in aluminum and stainless steel. They are used for decorative purposes and can be placed horizontal or vertical between the wall tiles.



Item No

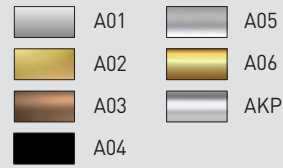
BSB 3010



Material / Color

Length

Packing Qty.

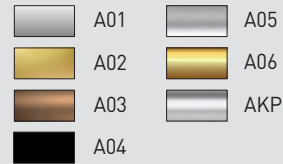
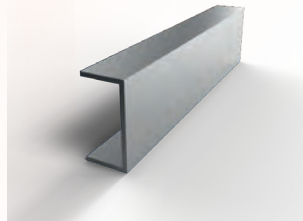
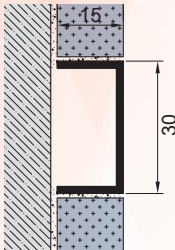


3 mt

20 pcs



BSB 3015

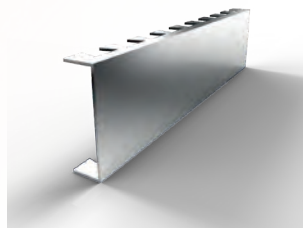
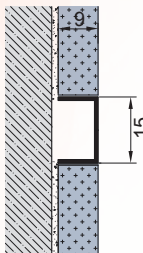


3 mt

20 pcs



BSB 1509

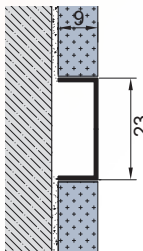


2,5 mt
2,44 mt

20 pcs



BSB 2309

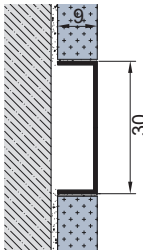


2,5 mt
2,44 mt

20 pcs



BSB 3009



2,5 mt
2,44 mt

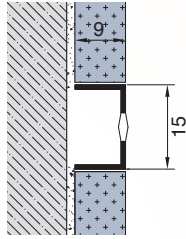
20 pcs



Please ask for stock info

Item No

BSB 1509 ZT



Material / Color

Length

Packing Qty.

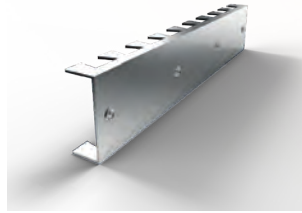
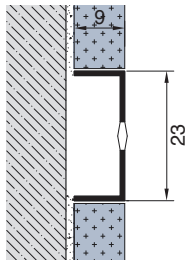


2,5 mt
2,44 mt

20 pcs



BSB 2309 ZT

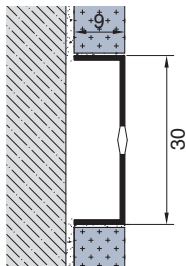


2,5 mt
2,44 mt

20 pcs



BSB 3009 ZT

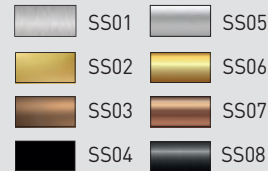
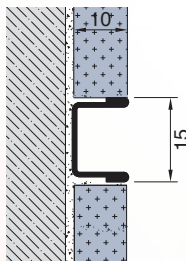


2,5 mt
2,44 mt

20 pcs



BSB 1510 F

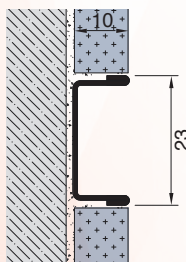


2,5 mt
2,44 mt

20 pcs



BSB 2310 F

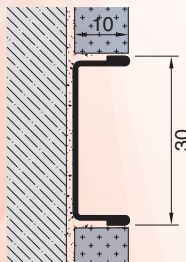


2,5 mt
2,44 mt

20 pcs



BSB 3010 F



2,5 mt
2,44 mt

20 pcs



Please ask for stock info

Decorative Border Profiles

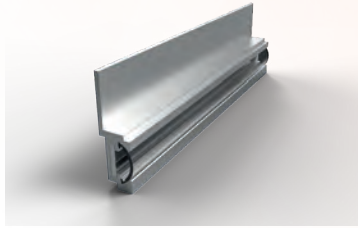
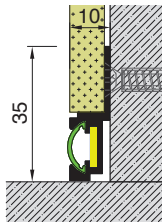




Asdekor led lighting profiles are manufactured in two types for different purposes such as decorative or assisting people in the dark spaces. They are suitable to use with some of Asteknik's skirtings.

Item No

BSP 1035
+ BMB 7540 LKP



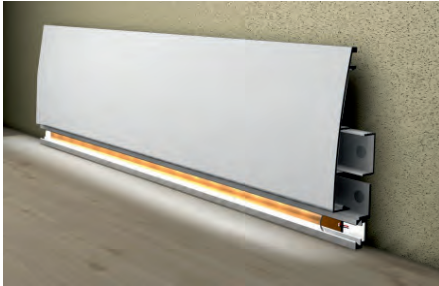
Material / Color

Length

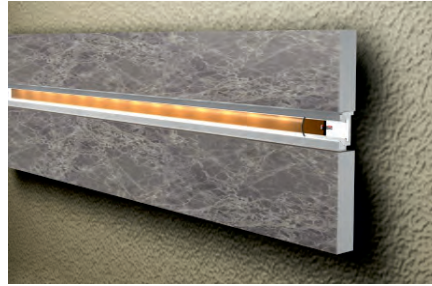
Packing Qty.

	A01		A05
	A02		A06
	A03		AKP
	A04		P30
			P31
			P33

3 mt	20 pcs
------	--------



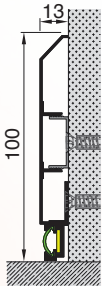
Application with skirting



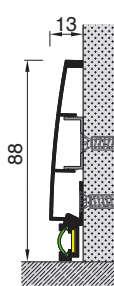
Application with border profile



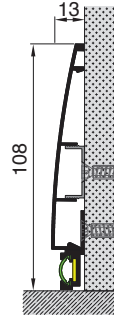
Application at the junction of floor & wall



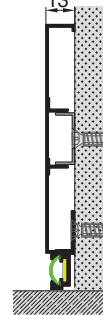
BSP 1383
BSP 1035



BSP 1370
BSP 1035

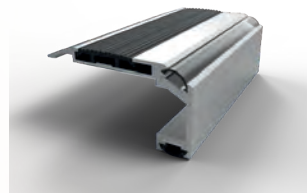
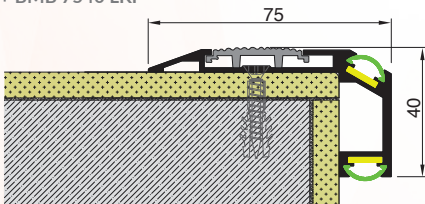


BSP 1390
BSP 1035



BSP 13100
BSP 1035

BMB 7540
+ BMB 3106 P33
+ BMB 7540 LKP



	A01		A05
	A02		A06
	A03		AKP
	A04		P30
			P31
			P33

3 mt	20 pcs
------	--------



Please ask for stock info

Led Lighting Profiles

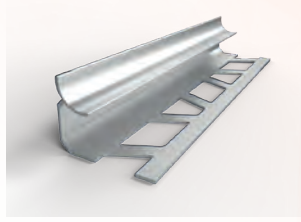
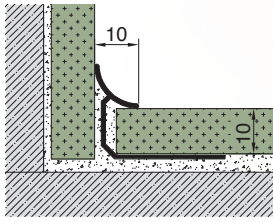
Asdekor internal profiles are manufactured in aluminium, stainless steel and pvc. They are used at the junction of the floor and walls where hygiene is required. Internal corner profiles give a decorative aspect at the corners as well as they prevent the water leakage and dirt accumulation at the corners.



Internal Corner Profiles

Item No

BBM 1010



Material / Color

Length

Packing Qty.

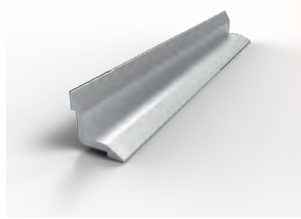
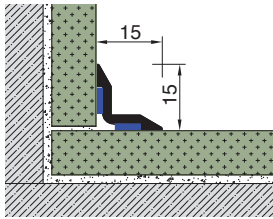
- A01
- A02
- A03
- A04
- A05
- A06
- AKP

2.7 mt

20 pcs



BBM 1515



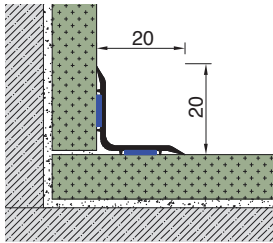
- A01
- A02
- A03
- A04
- A05
- A06
- AKP

3 mt

20 pcs



BBM 2020



- A01
- A02
- A03
- A04
- A05
- A06
- AKP

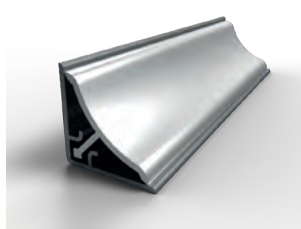
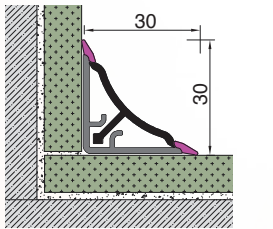
2.7 mt

20 pcs



BBM 3030

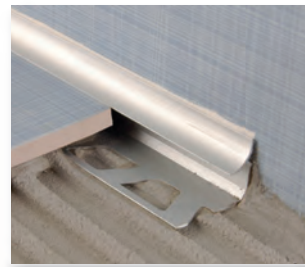
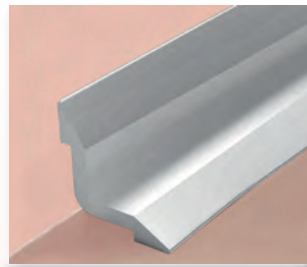
- Corner & end caps are available



- A01
- A02
- A03
- A04
- A05
- A06
- AKP
- P33

2.5 mt
3.66 mt

24 pcs



Internal Corner Profiles

Please ask for stock info

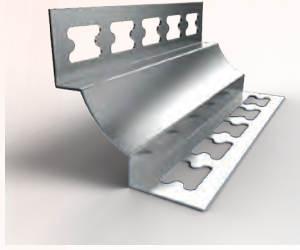
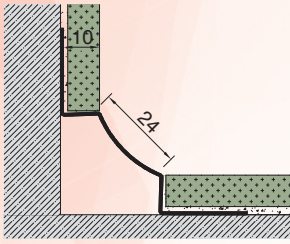


INTERNAL CORNER PROFILES

Stainless Steel Internal Corner Profiles

Item No

BBM 1024
Internal corner pieces are available



Material / Color

SS01	SS05
SS02	SS06
SS03	SS07
SS04	SS08
	SS21

Length

2,5 mt
2,44 mt

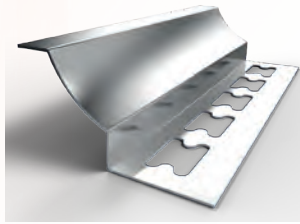
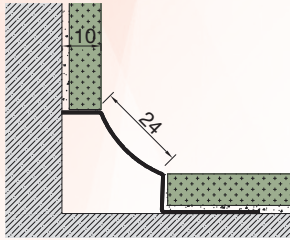
Packing Qty.

10 pcs



BBM 1024 TK

Internal corner pieces are available



SS01	SS05
SS02	SS06
SS03	SS07
SS04	SS08
	SS21

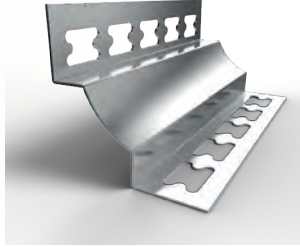
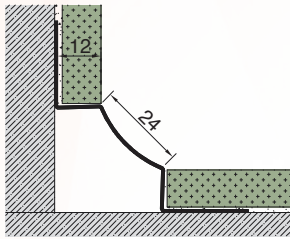
2,5 mt
2,44 mt

10 pcs



BBM 1224

Internal corner pieces are available



SS01	SS05
SS02	SS06
SS03	SS07
SS04	SS08
	SS21

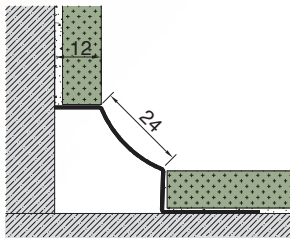
2,5 mt
2,44 mt

10 pcs



BBM 1224 TK

Internal corner pieces are available



SS01	SS05
SS02	SS06
SS03	SS07
SS04	SS08
	SS21

2,5 mt
2,44 mt

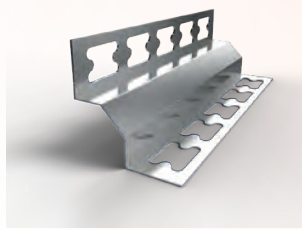
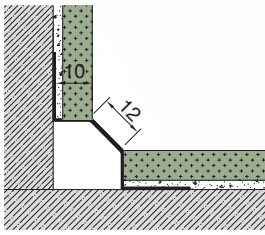
10 pcs



Please ask for stock info

Item No

BBM 1012



Material / Color

Length

Packing Qty.

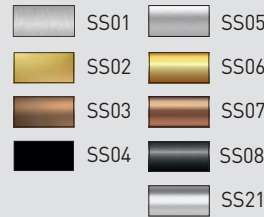
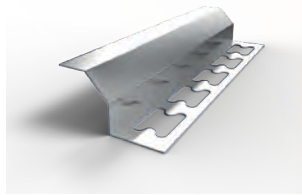
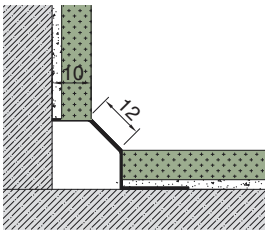


2,5 mt
2,44 mt

10 pcs



BBM 1012 TK

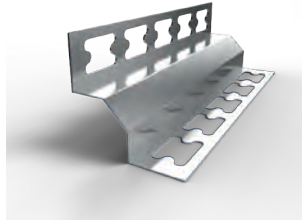
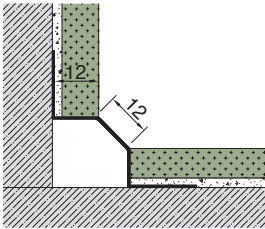


2,5 mt
2,44 mt

10 pcs



BBM 1212

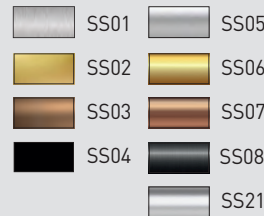
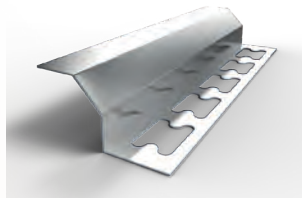
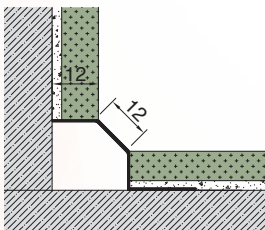


2,5 mt
2,44 mt

10 pcs



BBM 1212 TK

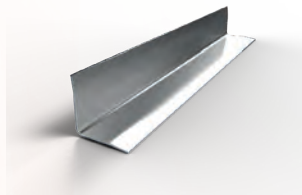
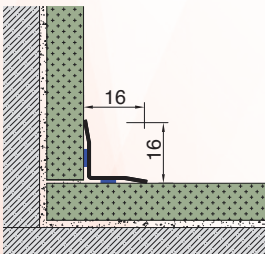


2,5 mt
2,44 mt

10 pcs



BBM 1616

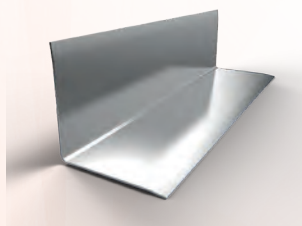
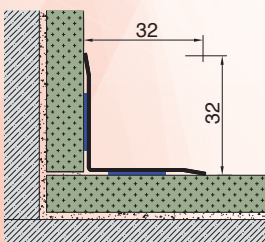


2,5 mt
2,44 mt

10 pcs



BBM 3232



2,5 mt
2,44 mt

10 pcs



Please ask for stock info

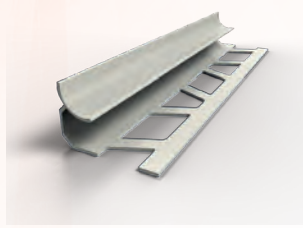
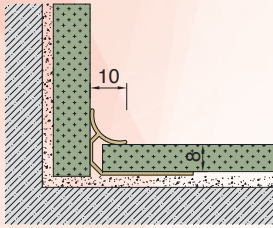
Item No

Material / Color

Length

Packing Qty.

BBMC 1008



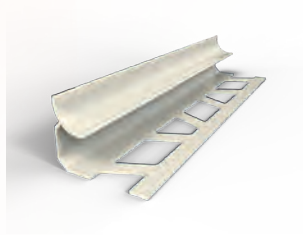
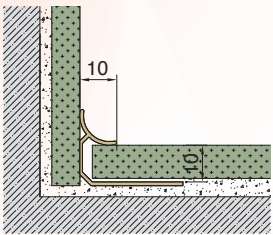
P30	P38
P32	P44
P35	

2.7 mt

100 pcs



BBMC 1010



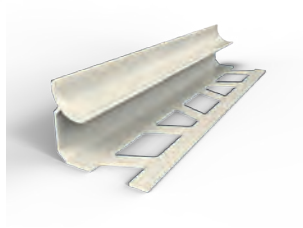
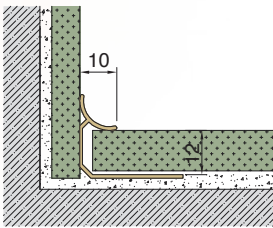
P30	P38
P32	P44
P35	

2.7 mt

100 pcs



BBMC 1012



P30	P38
P32	P44
P35	

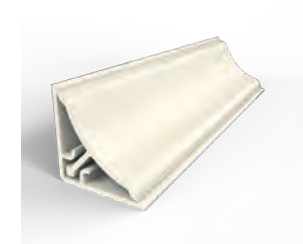
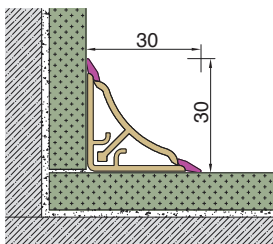
2.7 mt

100 pcs



BBM 3030

- Corner & end caps are available



P30	P38
P32	P44
P35	

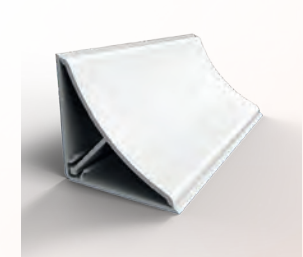
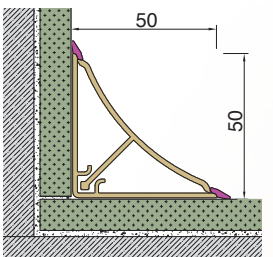
2.5 mt
3.66 mt

24 pcs



BBM 5050

- Corner & end caps are available



P30	P38
P32	P44
P35	

2.5 mt
3 mt

24 pcs



Please ask for stock info

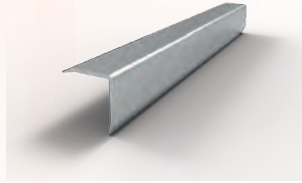
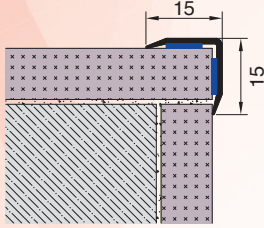
Asdekor external profiles are manufactured in aluminium, stainless steel and pvc. They are used at the outer corner of the walls to protect the final coating and to give a decorative aspect.



External Corner Profiles

Item No

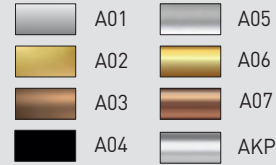
BKP 1515



Material / Color

Length

Packing Qty.

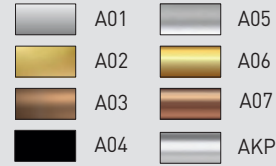
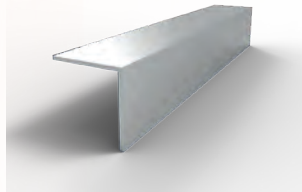
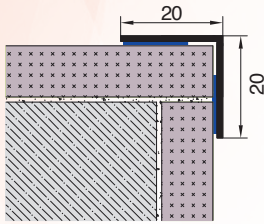


3 mt

20 pcs



BKP 2020

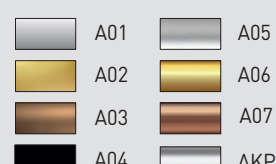
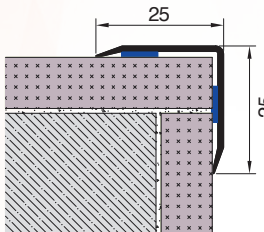


3 mt

20 pcs



BKP 2525

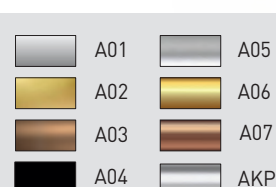
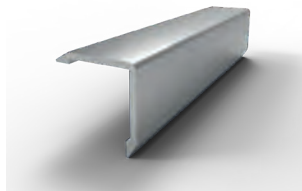
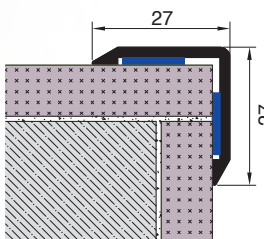


3 mt

20 pcs



BKP 2727

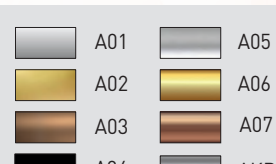
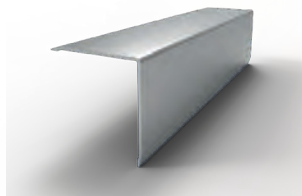
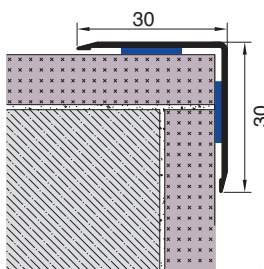


3 mt

20 pcs



BKP 3030

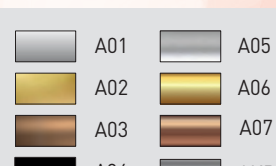
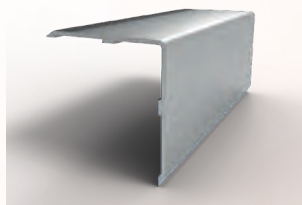
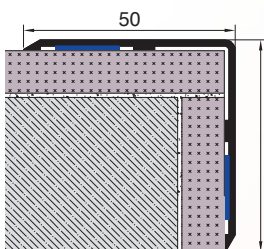


3 mt

10 pcs



BKPT 5050



3 mt

20 pcs



Please ask for stock info

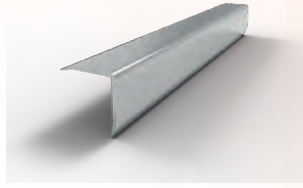
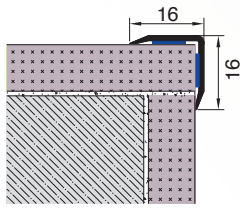
Item No

Material / Color

Length

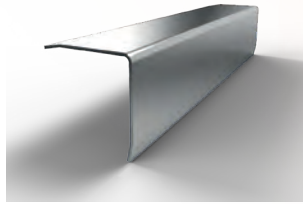
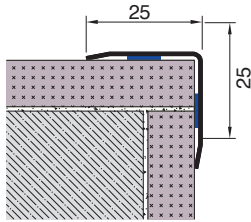
Packing Qty.

BKP 1616



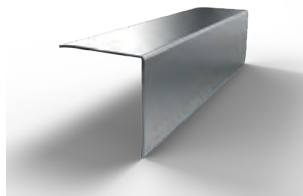
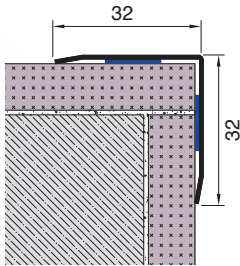
SS01	SS05	2,5 mt 2,44 mt	10 pcs
SS02	SS06		
SS03	SS07		
SS04	SS08		
SS21			

BKP 2525



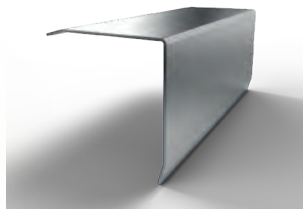
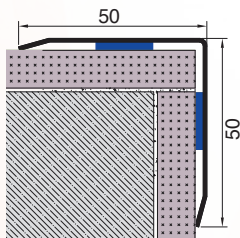
SS01	SS05	2,5 mt 2,44 mt	10 pcs
SS02	SS06		
SS03	SS07		
SS04	SS08		
SS21			

BKP 3232



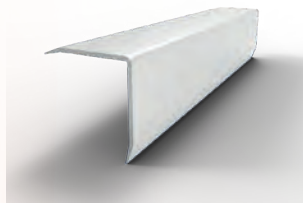
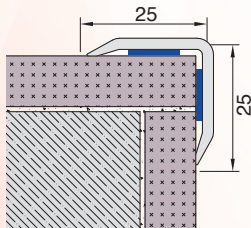
SS01	SS05	2,5 mt 2,44 mt	10 pcs
SS02	SS06		
SS03	SS07		
SS04	SS08		
SS21			

BKP 5050



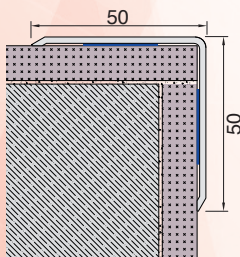
SS01	SS05	2,5 mt 2,44 mt	10 pcs
SS02	SS06		
SS03	SS07		
SS04	SS08		
SS21			

BKP 2525



P30		3 mt	20 pcs
-----	--	------	--------

BKP 5050



P30		3 mt	20 pcs
-----	--	------	--------

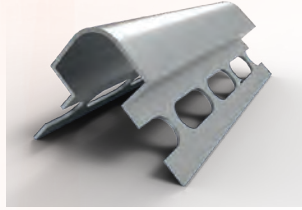
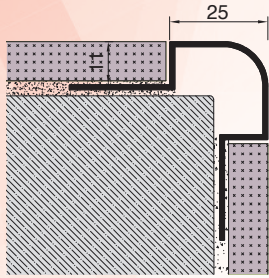
Please ask for stock info

EXTERNAL CORNER PROFILES

Flush Mounted External Corner Profiles

Item No

BKP 2511



Material / Color

Length

Packing Qty.

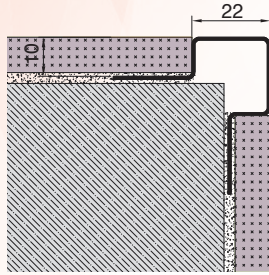
A01	A05
A02	A06
A03	A07
A04	AKP

3 mt

10 pcs



BKP 2210



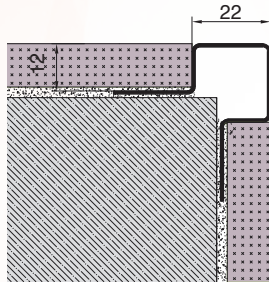
SS01	SS05
SS02	SS06
SS03	SS07
SS04	SS08
	SS21

2,5 mt
2,44 mt

10 pcs



BKP 2212



SS01	SS05
SS02	SS06
SS03	SS07
SS04	SS08
	SS21

2,5 mt
2,44 mt

10 pcs



Please ask for stock info

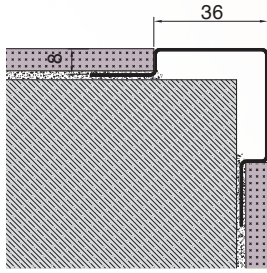
Item No

Material / Color

Length

Packing Qty.

BKP 3608



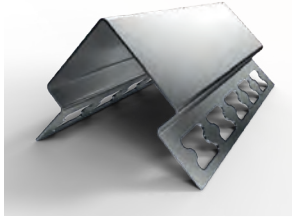
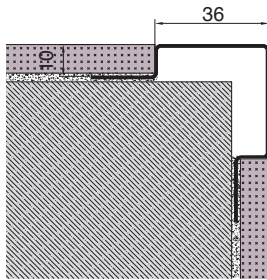
	SS01		SS05
	SS02		SS06
	SS03		SS07
	SS04		SS08
			SS21

2,5 mt
2,44 mt

10 pcs



BKP 3610



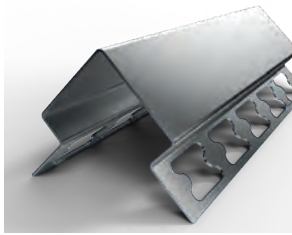
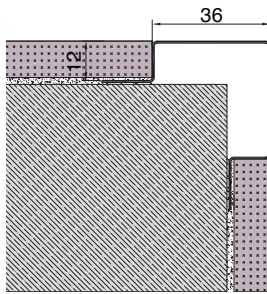
	SS01		SS05
	SS02		SS06
	SS03		SS07
	SS04		SS08
			SS21

2,5 mt
2,44 mt

10 pcs



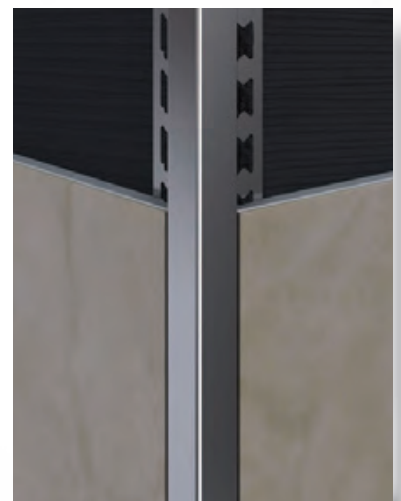
BKP 3612



	SS01		SS05
	SS02		SS06
	SS03		SS07
	SS04		SS08
			SS21

2,5 mt
2,44 mt

10 pcs



Please ask for stock info

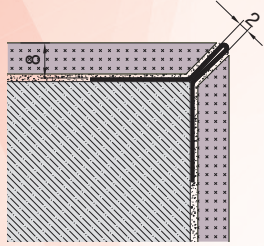


EXTERNAL CORNER PROFILES

Flush Mounted External Corner Profiles

Item No

BKP 0208



Material / Color

Length

Packing Qty.

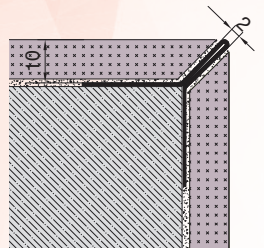
- SS01
- SS02
- SS03
- SS04
- SS05
- SS06
- SS07
- SS08
- SS21

2,5 mt
2,44 mt

10 pcs



BKP 0210



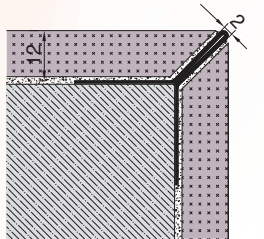
- SS01
- SS02
- SS03
- SS04
- SS05
- SS06
- SS07
- SS08
- SS21

2,5 mt
2,44 mt

10 pcs



BKP 0212



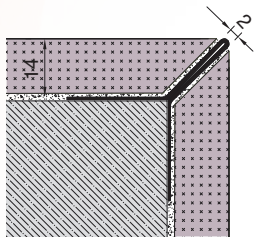
- SS01
- SS02
- SS03
- SS04
- SS05
- SS06
- SS07
- SS08
- SS21

2,5 mt
2,44 mt

10 pcs



BKP 0214



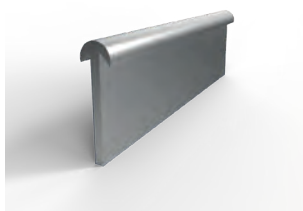
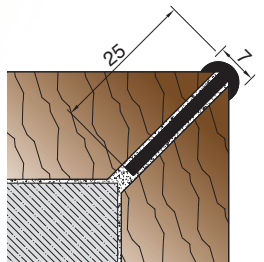
- SS01
- SS02
- SS03
- SS04
- SS05
- SS06
- SS07
- SS08
- SS21

2,5 mt
2,44 mt

10 pcs



BKP R725



- A01
- A02
- A03
- A04
- A05
- A06
- A07
- AKP

2,7 mt

20 pcs



Please ask for stock info

TERMİNALLER



Istanbul New Airport
Istanbul / Turkey



Muscat International Airport
Muscat / Oman



Dubai Airport Free Zone
Dubai / U.A.E



Cairo International Airport
Cairo / Egypt



New Doha International Airport
Doha / Qatar



Haramain High Speed Railway Project
Mecca & Medina Stations / Saudi Arabia



Dubai Metro
Dubai / U.A.E.



Tehran & Shiraz Subway Stations
Tehran & Shiraz / Iran

STADYUM & KAMU KURUM ve YAŞAM ALANLARI



Meydan Racecourse
Dubai / U.A.E



Al Habtoor Polo Resort & Club
Dubai / U.A.E



Shakhtar Donetsk Donbass Arena
Donetsk / Ukraine



Qatar National Convention Center
Doha / Qatar



Baku Convention Center
Baku / Azerbaijan



Oman Convention & Exhibition Center
Muscat / Oman



University of Semnan
Semnan / Iran



Nursultan Nazarbayev University
Astana / Kazakhstan



Khalifa University
Abu Dhabi / U.A.E



Qatar Academy
Doha / Qatar



Al Maktoum Hospital
Dubai / U.A.E



Al Mafrq Hospital
Abu Dhabi / U. A. E.



Royal Opera House
Muscat / Oman



Special Forces Facilities
Kuwait / Kuwait



Internal Security Force (ISF) Camp
Doha / Qatar



Azerbaijan Supreme Court
Baku / Azerbaijan



Merkez

Esenkent Mah. Buyruk Sk. No : 15/A
34776 Ümraniye - İstanbul

Telefon : +90 216 466 72 63 (Pbx)

Faks : +90 216 466 72 64

e-posta : info@asteknik.com

web : www.asteknik.com

